

For Research Use Only

Syntabulin Monoclonal antibody

Catalog Number: 67595-1-Ig



Basic Information

Catalog Number:

67595-1-Ig

GenBank Accession Number:

BC012082

Purification Method:

Protein A purification

Size:

150ul, Concentration: 1700 ug/ml by Nanodrop and 1000 ug/ml by Bradford method using BSA as the standard;

GeneID (NCBI):

55638

CloneNo.:

3B11C5

Source:

Mouse

UNIPROT ID:

Q9NX95

Recommended Dilutions:

WB 1:1000-1:6000

Isotype:

IgG2b

Full Name:

Golgi-localized protein

Calculated MW:

662 aa, 72 kDa

Immunogen Catalog Number:

AG9376

Observed MW:

90 kDa

Applications

Tested Applications:

WB, ELISA

Positive Controls:

WB : HeLa cells, HepG2 cells

Species Specificity:

human

Storage

Storage:

Store at -20°C. Stable for one year after shipment.

Storage Buffer:

PBS with 0.02% sodium azide and 50% glycerol pH 7.3.

Aliquoting is unnecessary for -20°C storage

*** 20ul sizes contain 0.1% BSA

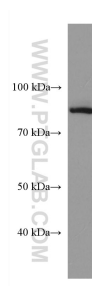
For technical support and original validation data for this product please contact:

T: 1 (888) 4PTGLAB (1-888-478-4522) (toll free in USA), or 1(312) 455-8498 (outside USA)

E: proteintech@ptglab.com
W: ptglab.com

This product is exclusively available under Proteintech Group brand and is not available to purchase from any other manufacturer.

Selected Validation Data



HeLa cells were subjected to SDS PAGE followed by western blot with 67595-1-Ig (Syntabulin antibody) at dilution of 1:3000 incubated at room temperature for 1.5 hours.