

For Research Use Only

Importin Beta Monoclonal antibody

Catalog Number: 67597-1-Ig **1 Publications**



Basic Information

Catalog Number: 67597-1-Ig	GenBank Accession Number: BC003572	Purification Method: Protein A purification
Size: 150ul , Concentration: 1500 ug/ml by Nanodrop and 780 ug/ml by Bradford method using BSA as the standard;	GeneID (NCBI): 3837	CloneNo.: 1A12B1
Source: Mouse	UNIPROT ID: Q14974	Recommended Dilutions: WB: 1:5000-1:50000 IHC: 1:200-1:800 FC (Intra): 0.40 ug per 10 ⁶ cells in a 100 µl suspension
Isotype: IgG2b	Full Name: karyopherin (importin) beta 1	
Immunogen Catalog Number: AG23094	Calculated MW: 97 kDa	
	Observed MW: 95-97 kDa	

Applications

Tested Applications: WB, IHC, FC (Intra), ELISA	Positive Controls:
Species Specificity: human	WB : IMR-32 cells, HeLa cells, HepG2 cells, Jurkat cells, K-562 cells, A549 cells, Caco-2 cells, MDA-MB-231 cells, MOLT-4
Note-IHC: suggested antigen retrieval with TE buffer pH 9.0; (*) Alternatively, antigen retrieval may be performed with citrate buffer pH 6.0	IHC : human colon cancer tissue, FC (Intra) : Jurkat cells,

Background Information

Importin beta1, also known karyopherin beta or KPNB1, is a nuclear transport receptor that plays a key role in the nuclear import process. Importin beta1 and importin alpha work in concert to transport cargo into the nucleus, functioning as an essential component of the classical nuclear localization signal (NLS) pathway. Elevated expression of importin beta1 has been found in cervical tumors. (22125623)

Notable Publications

Author	Pubmed ID	Journal	Application
Xiang-Lin Hao	38167440	J Transl Med	

Storage

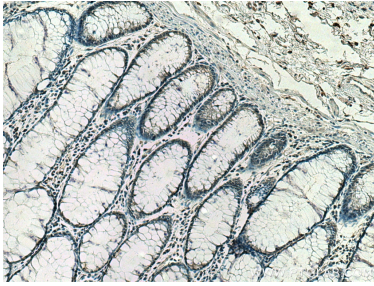
Storage:
Store at -20°C. Stable for one year after shipment.
Storage Buffer:
PBS with 0.02% sodium azide and 50% glycerol, pH7.3
Aliquoting is unnecessary for -20°C storage

*** 20ul sizes contain 0.1% BSA

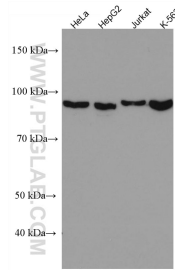
For technical support and original validation data for this product please contact:
T: 1 (888) 4PTGLAB (1-888-478-4522) (toll free in USA), or 1(312) 455-8498 (outside USA)
E: proteintech@ptglab.com
W: ptglab.com

This product is exclusively available under Proteintech Group brand and is not available to purchase from any other manufacturer.

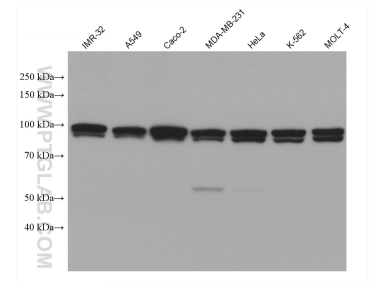
Selected Validation Data



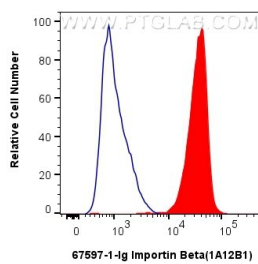
Immunohistochemical analysis of paraffin-embedded human colon cancer tissue slide using 67597-1-Ig (Importin beta antibody) at dilution of 1:400 (under 10x lens). Heat mediated antigen retrieval with Tris-EDTA buffer (pH 9.0).



Various lysates were subjected to SDS PAGE followed by western blot with 67597-1-Ig (Importin beta antibody) at dilution of 1:5000 incubated at room temperature for 1.5 hours.



Various lysates were subjected to SDS PAGE followed by western blot with 67597-1-Ig (Importin Beta antibody) at dilution of 1:20000 incubated at room temperature for 1.5 hours.



1X10⁶ Jurkat cells were intracellularly stained with 0.4 ug Anti-Human Importin Beta (67597-1-Ig, Clone:1A12B1) and CoraLite®488-Conjugated AffiniPure Goat Anti-Mouse IgG(H+L) at dilution 1:1000 (red), or 0.4 ug Mouse IgG2b Isotype Control (MPC-11) (65128-1-Ig, Clone: MPC-11) (blue). Cells were fixed and permeabilized with True-Nuclear Transcription Factor Buffer Set.