

For Research Use Only

GSS Monoclonal antibody

Catalog Number: 67598-1-Ig

Featured Product

1 Publications



Basic Information

Catalog Number: 67598-1-Ig	GenBank Accession Number: BC007927	Purification Method: Protein A purification
Size: 150ul , Concentration: 2400 µg/ml by Nanodrop and 1000 µg/ml by Bradford method using BSA as the standard;	GeneID (NCBI): 2937	CloneNo.: 1F12G1
Source: Mouse	Full Name: glutathione synthetase	Recommended Dilutions: WB 1:5000-1:50000 IHC 1:500-1:2000 IF 1:200-1:800
Isotype: IgG1	Calculated MW: 474 aa, 52 kDa	
Immunogen Catalog Number: AG8354	Observed MW: 52 kDa	

Applications

Tested Applications: IF, IHC, WB, ELISA	Positive Controls: WB : CHO cells, rat liver tissue, HEK-293 cells, HeLa cells, HepG2 cells, Jurkat cells IHC : human liver cancer tissue, IF : HeLa cells,
Cited Applications: WB	
Species Specificity: Human, Mouse, Rat, pig	
Cited Species: human	
Note-IHC: suggested antigen retrieval with TE buffer pH 9.0; (*) Alternatively, antigen retrieval may be performed with citrate buffer pH 6.0	

Background Information

Notable Publications

Author	Pubmed ID	Journal	Application
Xiaohan Jin	36243112	J Biol Chem	WB

Storage

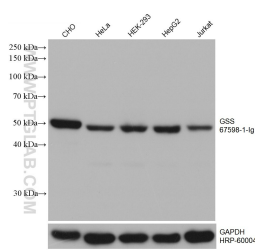
Storage:
Store at -20°C. Stable for one year after shipment.
Storage Buffer:
PBS with 0.02% sodium azide and 50% glycerol pH 7.3.
Aliquoting is unnecessary for -20°C storage

*** 20ul sizes contain 0.1% BSA

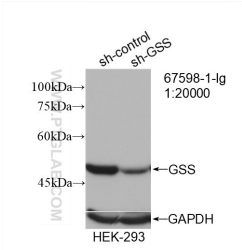
For technical support and original validation data for this product please contact:
T: 1 (888) 4PTGLAB (1-888-478-4522) (toll free in USA), or 1(312) 455-8498 (outside USA)
E: proteintech@ptglab.com
W: ptglab.com

This product is exclusively available under Proteintech Group brand and is not available to purchase from any other manufacturer.

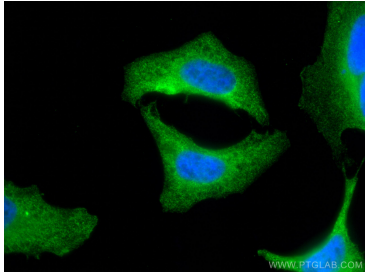
Selected Validation Data



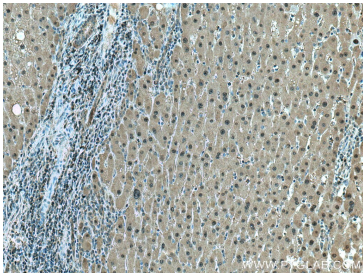
Various lysates were subjected to SDS PAGE followed by western blot with 67598-1-Ig (GSS antibody) at dilution of 1:20000 incubated at room temperature for 1.5 hours. The membrane was stripped and reblotted with HRP-conjugated GAPDH Monoclonal antibody (HRP-60004) as loading control.



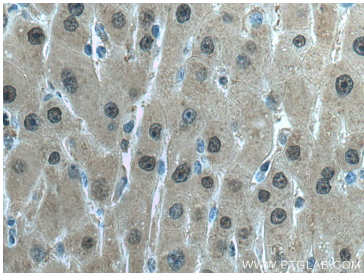
WB result of GSS antibody (67598-1-Ig; 1:20000; incubated at room temperature for 1.5 hours) with sh-Control and sh-GSS transfected HEK-293 cells.



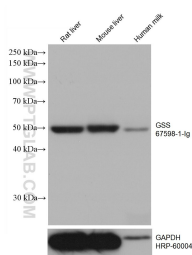
Immunofluorescent analysis of (4% PFA) fixed HeLa cells using GSS antibody (67598-1-Ig, Clone: 1F12G1) at dilution of 1:400 and CoraLite®488-Conjugated AffiniPure Goat Anti-Mouse IgG(H+L).



Immunohistochemical analysis of paraffin-embedded human liver cancer tissue slide using 67598-1-Ig (GSS antibody) at dilution of 1:1000 (under 10x lens). Heat mediated antigen retrieval with Tris-EDTA buffer (pH 9.0).



Immunohistochemical analysis of paraffin-embedded human liver cancer tissue slide using 67598-1-Ig (GSS antibody) at dilution of 1:1000 (under 40x lens). Heat mediated antigen retrieval with Tris-EDTA buffer (pH 9.0).



Various lysates were subjected to SDS PAGE followed by western blot with 67598-1-Ig (GSS antibody) at dilution of 1:20000 incubated at room temperature for 1.5 hours. The membrane was stripped and reblotted with HRP-conjugated GAPDH Monoclonal antibody (HRP-60004) as loading control.