

For Research Use Only

SDHB Monoclonal antibody

Catalog Number: 67600-1-Ig

Featured Product

5 Publications



Basic Information

Catalog Number:

67600-1-Ig

Size:

150ul, Concentration: 1000 ug/ml by Bradford method using BSA as the standard;

Source:

Mouse

Isotype:

IgG1

Immunogen Catalog Number:

AG29868

GenBank Accession Number:

BC007840

GeneID (NCBI):

6390

UNIPROT ID:

P21912

Full Name:

succinate dehydrogenase complex, subunit B, iron sulfur (lp)

Calculated MW:

32 kDa

Observed MW:

28-32 kDa

Purification Method:

Protein A purification

CloneNo.:

1A2A5

Recommended Dilutions:

WB 1:5000-1:50000

IHC 1:1000-1:4000

IF-P 1:200-1:800

Applications

Tested Applications:

WB, IHC, IF-P, ELISA

Cited Applications:

WB

Species Specificity:

human, mouse, rat, pig

Cited Species:

human, mouse, rabbit

Note-IHC: suggested antigen retrieval with TE buffer pH 9.0; (*) Alternatively, antigen retrieval may be performed with citrate buffer pH 6.0

Positive Controls:

WB: U2OS cells, HeLa cells, HepG2 cells, HSC-T6 cells, pig brain tissue, HEK-293 cells, K-562 cells, NIH/3T3 cells, Neuro-2a cells, mouse brain tissue, rat brain tissue

IHC: mouse skeletal muscle tissue, human stomach cancer tissue

IF-P: human liver cancer tissue,

Background Information

SDHB(Succinate dehydrogenase [ubiquinone] iron-sulfur subunit, mitochondrial) is also named as SDH, SDH1 and belongs to the succinate dehydrogenase/fumarate reductase iron-sulfur protein family. The SDHD, SDHB, and SDHC genes encode subunits of mitochondrial complex II (succinate dehydrogenase). Mitochondrial complex II is a heterotetrameric complex involved in the aerobic electron transport chain and catalyses the oxidation of succinate to fumarate (Krebs cycle) with transport of electrons to the ubiquinone pool. SDHA and SDHB are the hydrophilic catalytic part of the complex and are highly conserved(J Med Genet 2004;41:e99). Defects in SDHB are a cause of susceptibility to pheochromocytoma (PCC), paragangliomas type 4 (PGL4), paraganglioma and gastric stromal sarcoma (PGGSS) and Cowden-like syndrome (CWDLS).

Notable Publications

Author	Pubmed ID	Journal	Application
Min Zheng	36257219	Phytomedicine	WB
Long Cheng	35445769	Phytother Res	WB
Jiaoyan Ma	39111634	Biochim Biophys Acta Mol Basis Dis	WB

Storage

Storage:

Store at -20°C. Stable for one year after shipment.

Storage Buffer:

PBS with 0.02% sodium azide and 50% glycerol pH 7.3.

Aliquoting is unnecessary for -20°C storage

*** 20ul sizes contain 0.1% BSA

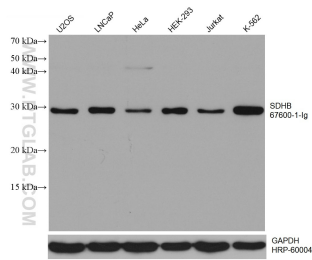
For technical support and original validation data for this product please contact:

T: 1 (888) 4PTGLAB (1-888-478-4522) (toll free in USA), or 1(312) 455-8498 (outside USA)

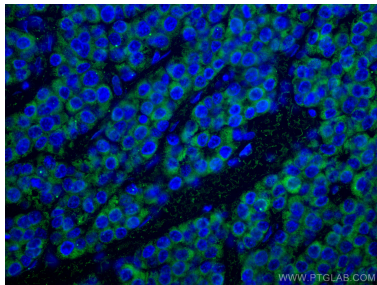
E: proteintech@ptglab.com
W: ptglab.com

This product is exclusively available under Proteintech Group brand and is not available to purchase from any other manufacturer.

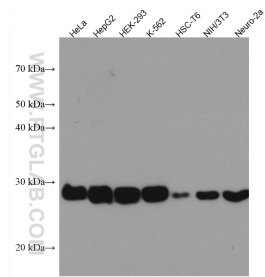
Selected Validation Data



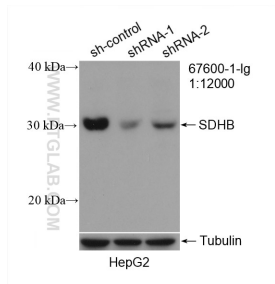
Various lysates were subjected to SDS PAGE followed by western blot with 67600-1-Ig (SDHB antibody) at dilution of 1:15000 incubated at room temperature for 1.5 hours. The membrane was stripped and reblotted with HRP-conjugated GAPDH Monoclonal antibody (HRP-60004) as loading control.



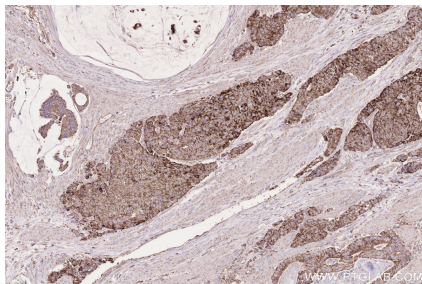
Immunofluorescent analysis of (4% PFA) fixed human liver cancer tissue using SDHB antibody (67600-1-Ig, Clone: 1A2A5) at dilution of 1:400 and CoraLite®488-Conjugated AffiniPure Goat Anti-Mouse IgG(H+L).



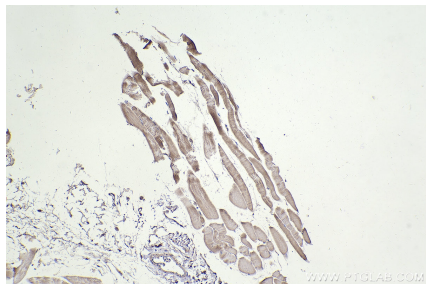
Various lysates were subjected to SDS PAGE followed by western blot with 67600-1-Ig (SDHB antibody) at dilution of 1:10000 incubated at room temperature for 1.5 hours.



WB result of SDHB antibody (67600-1-Ig; 1:12000; incubated at room temperature for 1.5 hours) with sh-Control and sh-SDHB transfected HepG2 cells.



Immunohistochemical analysis of paraffin-embedded human stomach cancer tissue slide using 67600-1-Ig (SDHB antibody) at dilution of 1:2000 (under 10x lens). Heat mediated antigen retrieval with Tris-EDTA buffer (pH 9.0).



Immunohistochemical analysis of paraffin-embedded mouse skeletal muscle tissue slide using 67600-1-Ig (SDHB antibody) at dilution of 1:2000 (under 10x lens). Heat mediated antigen retrieval with Tris-EDTA buffer (pH 9.0).