

For Research Use Only

SERPIND1 Monoclonal antibody

Catalog Number: 67602-1-Ig



Basic Information

Catalog Number: 67602-1-Ig	GenBank Accession Number: BC035028	Purification Method: Protein G purification
Size: 150ul , Concentration: 1000 ug/ml by Bradford method using BSA as the standard;	GeneID (NCBI): 3053	CloneNo.: 2C1E1
Source: Mouse	UNIPROT ID: P05546	Recommended Dilutions: WB 1:5000-1:50000 IHC 1:400-1:1600 IF/ICC 1:200-1:800
Isotype: IgG1	Full Name: serpin peptidase inhibitor, clade D (heparin cofactor), member 1	
Immunogen Catalog Number: AG26351	Calculated MW: 499 aa, 57 kDa	
	Observed MW: 66-70 kDa	

Applications

Tested Applications: WB, IHC, IF/ICC, ELISA	Positive Controls:
Species Specificity: Human, pig	WB : human plasma, human placenta tissue, pig plasma
Note-IHC: suggested antigen retrieval with TE buffer pH 9.0; (*) Alternatively, antigen retrieval may be performed with citrate buffer pH 6.0	IHC : human liver tissue, IF/ICC : HepG2 cells,

Storage

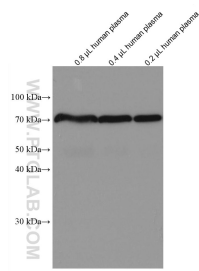
Storage:
Store at -20°C.
Storage Buffer:
PBS with 0.02% sodium azide and 50% glycerol pH 7.3.
Aliquoting is unnecessary for -20°C storage

*** 20ul sizes contain 0.1% BSA

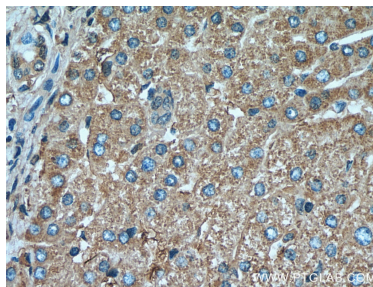
For technical support and original validation data for this product please contact:
T: 1 (888) 4PTGLAB (1-888-478-4522) (toll free in USA), or 1(312) 455-8498 (outside USA)
E: proteintech@ptglab.com
W: ptglab.com

This product is exclusively available under Proteintech Group brand and is not available to purchase from any other manufacturer.

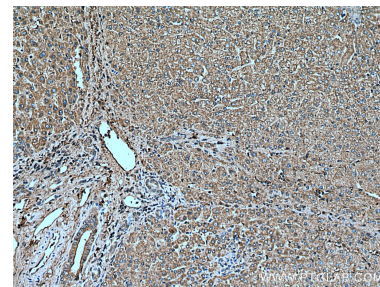
Selected Validation Data



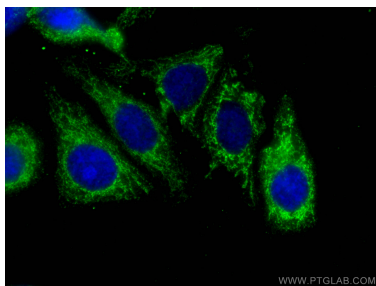
0.8 μ L, 0.4 μ L, and 0.2 μ L human plasma lysates were subjected to SDS PAGE followed by western blot with 67602-1-Ig (SERPIND1 antibody) at dilution of 1:20000 incubated at room temperature for 1.5 hours.



Immunohistochemical analysis of paraffin-embedded human liver tissue slide using 67602-1-Ig (SERPIND1 antibody) at dilution of 1:800 (under 40x lens). Heat mediated antigen retrieval with Tris-EDTA buffer (pH 9.0).



Immunohistochemical analysis of paraffin-embedded human liver tissue slide using 67602-1-Ig (SERPIND1 antibody) at dilution of 1:800 (under 10x lens). Heat mediated antigen retrieval with Tris-EDTA buffer (pH 9.0).



Immunofluorescent analysis of (-20°C Ethanol) fixed HepG2 cells using SERPIND1 antibody (67602-1-Ig, Clone: 2C1E1) at dilution of 1:400 and CoraLite®488-Conjugated Goat Anti-Mouse IgG(H+L).