

For Research Use Only

SERPIND1 Monoclonal antibody, PBS Only



Catalog Number: 67602-1-PBS

Basic Information

Catalog Number:

67602-1-PBS

Size:

100ug, Concentration: 1 mg/ml by Nanodrop;

Source:

Mouse

Isotype:

IgG1

Immunogen Catalog Number:

AG26351

GenBank Accession Number:

BC035028

GeneID (NCBI):

3053

UNIPROT ID:

P05546

Full Name:

serpin peptidase inhibitor, clade D (heparin cofactor), member 1

Calculated MW:

499 aa, 57 kDa

Observed MW:

66-70 kDa

Purification Method:

Protein A purification

CloneNo.:

2C1E1

Applications

Tested Applications:

WB, IF, IHC, Indirect ELISA

Species Specificity:

Human, pig

Storage

Storage:

Store at -80°C.

Storage Buffer:

PBS Only

For technical support and original validation data for this product please contact:

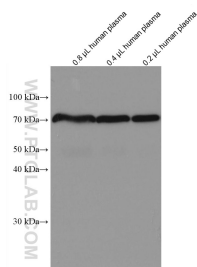
T: 1 (888) 4PTGLAB (1-888-478-4522) (toll free in USA), or 1(312) 455-8498 (outside USA)

E: proteintech@ptglab.com

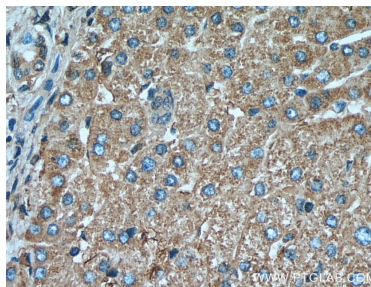
W: ptglab.com

This product is exclusively available under Proteintech Group brand and is not available to purchase from any other manufacturer.

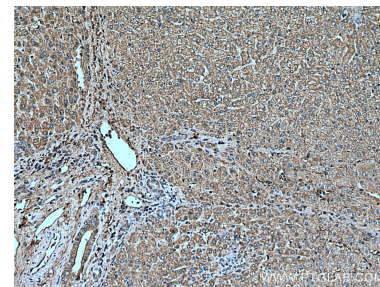
Selected Validation Data



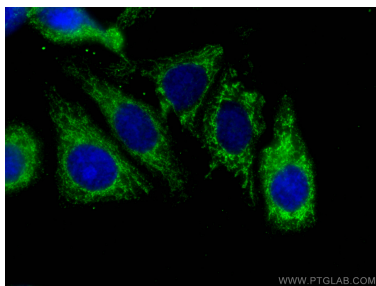
0.8 µL, 0.4 µL, and 0.2 µL human plasma lysates were subjected to SDS PAGE followed by western blot with 67602-1-Ig (SERPIND1 antibody) at dilution of 1:20000 incubated at room temperature for 1.5 hours. This data was developed using the same antibody clone with 67602-1-PBS in a different storage buffer formulation.



Immunohistochemical analysis of paraffin-embedded human liver tissue slide using 67602-1-Ig (SERPIND1 antibody) at dilution of 1:800 (under 40x lens). Heat mediated antigen retrieval with Tris-EDTA buffer (pH 9.0). This data was developed using the same antibody clone with 67602-1-PBS in a different storage buffer formulation.



Immunohistochemical analysis of paraffin-embedded human liver tissue slide using 67602-1-Ig (SERPIND1 antibody) at dilution of 1:800 (under 10x lens). Heat mediated antigen retrieval with Tris-EDTA buffer (pH 9.0). This data was developed using the same antibody clone with 67602-1-PBS in a different storage buffer formulation.



Immunofluorescent analysis of (-20°C Ethanol) fixed HepG2 cells using SERPIND1 antibody (67602-1-Ig, Clone: 2C1E1) at dilution of 1:400 and CoraLite®488-Conjugated AffiniPure Goat Anti-Mouse IgG(H+L). This data was developed using the same antibody clone with 67602-1-PBS in a different storage buffer formulation.