

For Research Use Only

SCLY Monoclonal antibody

Catalog Number: 67606-1-Ig



Basic Information

Catalog Number: 67606-1-Ig	GenBank Accession Number: BC007891	Purification Method: Protein G purification
Size: 150ul, Concentration: 1700 µg/ml by Nanodrop and 713 µg/ml by Bradford method using BSA as the standard;	GeneID (NCBI): 51540	CloneNo.: 3A2G7
Source: Mouse	Full Name: selenocysteine lyase	Recommended Dilutions: WB 1:1000-1:4000 IHC 1:500-1:2000
Isotype: IgG1	Calculated MW: 49 kDa	
Immunogen Catalog Number: AG28841	Observed MW: 48 kDa	

Applications

Tested Applications:

IHC, WB, ELISA

Species Specificity:

Human, rat

Note-IHC: suggested antigen retrieval with TE buffer pH 9.0; (*) Alternatively, antigen retrieval may be performed with citrate buffer pH 6.0

Positive Controls:

WB: LNCaP cells, L02 cells, HepG2 cells, K-562 cells, HSC-T6 cells

IHC: human breast cancer tissue,

Background Information

Storage

Storage:

Store at -20°C.

Storage Buffer:

PBS with 0.02% sodium azide and 50% glycerol pH 7.3.

Aliquoting is unnecessary for -20°C storage

*** 20ul sizes contain 0.1% BSA

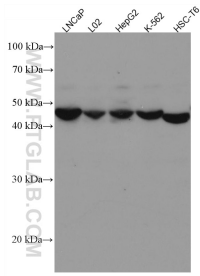
For technical support and original validation data for this product please contact:

T: 1 (888) 4PTGLAB (1-888-478-4522) (toll free in USA), or 1(312) 455-8498 (outside USA)

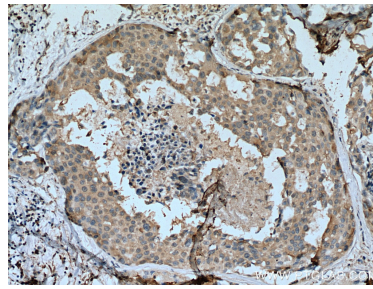
E: proteintech@ptglab.com
W: ptglab.com

This product is exclusively available under Proteintech Group brand and is not available to purchase from any other manufacturer.

Selected Validation Data



Various lysates were subjected to SDS PAGE followed by western blot with 67606-1-Ig (SCLY antibody) at dilution of 1:2000 incubated at room temperature for 1.5 hours.



Immunohistochemical analysis of paraffin-embedded human breast cancer tissue slide using 67606-1-Ig (SCLY antibody) at dilution of 1:1000 (under 10x lens). Heat mediated antigen retrieval with Tris-EDTA buffer (pH 9.0).