

For Research Use Only

SCLY Monoclonal antibody, PBS Only (Detector)

Catalog Number: 67606-1-PBS



Basic Information

| | | |
|--|--|---|
| Catalog Number: 67606-1-PBS | GenBank Accession Number: BC007891 | Purification Method: Protein A purification |
| Size: 100ug , Concentration: 1mg/ml by Nanodrop; | GeneID (NCBI): 51540 | CloneNo.: 3A2G7 |
| Source: Mouse | UNIPROT ID: Q96I15 | |
| Isotype: IgG1 | Full Name: selenocysteine lyase | |
| Immunogen Catalog Number: AG28841 | Calculated MW: 49 kDa | |
| | Observed MW: 48 kDa | |

Applications

Tested Applications:
WB, IHC, Cytometric bead array, Indirect ELISA

Species Specificity:
human, rat

Product Information

67606-1-PBS targets SCLY as part of a matched antibody pair:

MP51242-1: 67606-2-PBS capture and 67606-1-PBS detection (validated in Cytometric bead array)

Unconjugated mouse monoclonal antibody pair in PBS only (BSA and azide free) storage buffer at a concentration of 1 mg/mL, ready for conjugation.

This conjugation ready format makes antibodies ideal for use in many applications including: ELISAs, multiplex assays requiring matched pairs, mass cytometry, and multiplex imaging applications. Antibody use should be optimized by the end user for each application and assay.

Storage

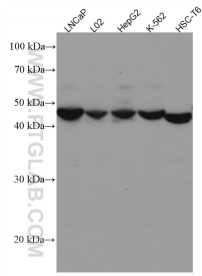
Storage:
Store at -80°C.

Storage Buffer:
PBS Only

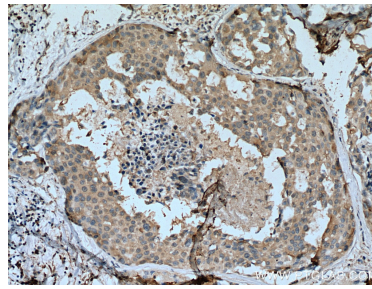
For technical support and original validation data for this product please contact:
T: 1 (888) 4PTGLAB (1-888-478-4522) (toll free in USA), or 1(312) 455-8498 (outside USA) E: proteintech@ptglab.com
W: ptglab.com

This product is exclusively available under Proteintech Group brand and is not available to purchase from any other manufacturer.

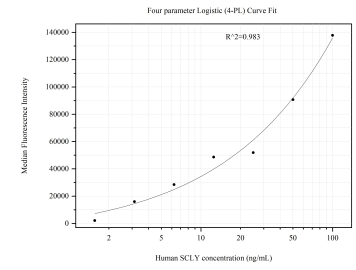
Selected Validation Data



Various lysates were subjected to SDS PAGE followed by western blot with 67606-1-Ig (SCLY antibody) at dilution of 1:2000 incubated at room temperature for 1.5 hours. This data was developed using the same antibody clone with 67606-1-PBS in a different storage buffer formulation.



Immunohistochemical analysis of paraffin-embedded human breast cancer tissue slide using 67606-1-Ig (SCLY antibody) at dilution of 1:1000 (under 10x lens). Heat mediated antigen retrieval with Tris-EDTA buffer (pH 9.0). This data was developed using the same antibody clone with 67606-1-PBS in a different storage buffer formulation.



Cytometric bead array standard curve of MP51242-1, SCLY Monoclonal Matched Antibody Pair, PBS Only. Capture antibody: 67606-2-PBS. Detection antibody: 67606-1-PBS. Standard: Ag28841. Range: 1.563-100 ng/mL.