

For Research Use Only

MYBPC3 Monoclonal antibody

Catalog Number: 67608-1-Ig



Basic Information

Catalog Number: 67608-1-Ig	GenBank Accession Number: BC151211	Purification Method: Protein A purification
Size: 150ul, Concentration: 1000 µg/ml by Nanodrop and 447 µg/ml by Bradford method using BSA as the standard;	GeneID (NCBI): 4607	CloneNo.: 3C8F8
Source: Mouse	Full Name: myosin binding protein C, cardiac	Recommended Dilutions: WB 1:5000-1:50000 IHC 1:50-1:500 IF 1:200-1:800
Isotype: IgG1	Calculated MW: 1274 aa, 141 kDa	
Immunogen Catalog Number: AG15848	Observed MW: 140-150 kDa	

Applications

Tested Applications:

IF, IHC, WB, ELISA

Species Specificity:

Human, mouse, rat, pig, rabbit

Note-IHC: suggested antigen retrieval with TE buffer pH 9.0; (*) Alternatively, antigen retrieval may be performed with citrate buffer pH 6.0

Positive Controls:

WB: mouse heart tissue, H9C2 cells, rabbit heart tissue, pig heart tissue

IHC: human heart tissue, rat heart tissue

IF: rat heart tissue,

Background Information

MYBPC3 belongs to the immunoglobulin superfamily and MyBP family. MYBPC3 located in the crossbridge region of vertebrate striated muscle a bands. In vitro it binds MHC, F-actin and native thin filaments, and modifies the activity of actin-activated myosin ATPase. It may modulate muscle contraction or may play a more structural role. Defects in MYBPC3 are the cause of cardiomyopathy familial hypertrophic type 4 (CMH4).

Storage

Storage:

Store at -20°C. Stable for one year after shipment.

Storage Buffer:

PBS with 0.02% sodium azide and 50% glycerol pH 7.3.

Aliquoting is unnecessary for -20°C storage

*** 20ul sizes contain 0.1% BSA

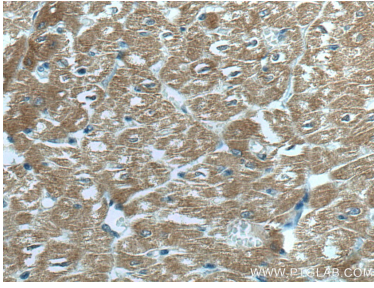
For technical support and original validation data for this product please contact:

T: 1 (888) 4PTGLAB (1-888-478-4522) (toll free in USA), or 1(312) 455-8498 (outside USA)

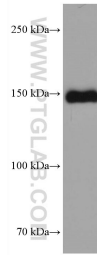
E: proteintech@ptglab.com
W: ptglab.com

This product is exclusively available under Proteintech Group brand and is not available to purchase from any other manufacturer.

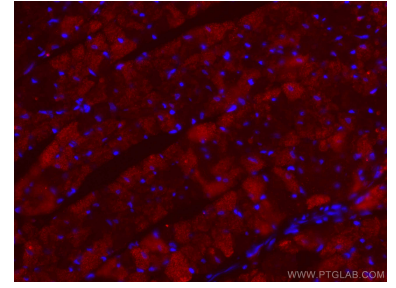
Selected Validation Data



Immunohistochemical analysis of paraffin-embedded human heart tissue slide using 67608-1-Ig (MYBPC3 antibody) at dilution of 1:200 (under 40x lens). Heat mediated antigen retrieval with Tris-EDTA buffer (pH 9.0).



mouse heart tissue were subjected to SDS PAGE followed by western blot with 67608-1-Ig (MYBPC3 antibody) at dilution of 1:20000 incubated at room temperature for 1.5 hours.



Immunofluorescent analysis of (4% PFA) fixed rat heart tissue using MYBPC3 antibody (67608-1-Ig, Clone: 3C8F8) at dilution of 1:400 and CoraLite®488-Conjugated AffiniPure Goat Anti-Mouse IgG(H+L).