

For Research Use Only

Ovalbumin Monoclonal antibody

Catalog Number: 67614-1-Ig **2 Publications**



Basic Information

Catalog Number: 67614-1-Ig	GenBank Accession Number: NM_205152	Purification Method: Protein A purification
Size: 150ul , Concentration: 1000 ug/ml by Bradford method using BSA as the standard;	GeneID (NCBI): UNIPROT ID: P01012	CloneNo.: 1D3D5
Source: Mouse	Full Name: Calculated MW: 43 kDa	Recommended Dilutions: WB 1:20000-1:100000
Isotype: IgG1	Observed MW: 43 kDa	

Applications

Tested Applications: WB, ELISA	Positive Controls: WB : Chicken egg,
Cited Applications: WB	
Species Specificity: chicken	

Background Information

Ovalbumin, also named as OVA, is a storage protein of egg white. It belongs to the serpin superfamily, but unlike most serpins, it is not a serine protease inhibitor. This antibody is specific to ovalbumin of chicken.

Notable Publications

Author	Pubmed ID	Journal	Application
Wenlu Yan	39711226	Adv Mater	WB
Zhuolin Dong	38972639	J Control Release	WB

Storage

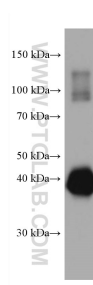
Storage:
Store at -20°C. Stable for one year after shipment.
Storage Buffer:
PBS with 0.02% sodium azide and 50% glycerol pH 7.3.
Aliquoting is unnecessary for -20°C storage

*** 20ul sizes contain 0.1% BSA

For technical support and original validation data for this product please contact:
T: 1 (888) 4PTGLAB (1-888-478-4522) (toll free in USA), or 1(312) 455-8498 (outside USA)
E: proteintech@ptglab.com
W: ptglab.com

This product is exclusively available under Proteintech Group brand and is not available to purchase from any other manufacturer.

Selected Validation Data



5 nL Chicken egg were subjected to SDS PAGE followed by western blot with 67614-1-Ig (Ovalbumin Antibody) at dilution of 1:100000 incubated at room temperature for 1.5 hours.