

For Research Use Only

CREB3L1,OASIS Monoclonal antibody

Catalog Number: 67617-1-Ig



Basic Information

Catalog Number: 67617-1-Ig	GenBank Accession Number: BC015781	Purification Method: Protein G purification
Size: 150ul , Concentration: 1700 ug/ml by Nanodrop and 1000 ug/ml by Bradford method using BSA as the standard;	GeneID (NCBI): 90993	CloneNo.: 2B5B4
Source: Mouse	UNIPROT ID: Q96BA8	Recommended Dilutions: WB 1:20000-1:100000
Isotype: IgG1	Full Name: cAMP responsive element binding protein 3-like 1	
Immunogen Catalog Number: AG28042	Calculated MW: 57 kDa	
	Observed MW: 58 kDa	

Applications

Tested Applications: WB, ELISA, FC (Intra)	Positive Controls: WB : HepG2 cells, HeLa cells, HSC-T6 cells, NIH/3T3 cells, A375 cells, A549 cells, 4T1 cells
Species Specificity: Human, mouse, rat	

Background Information

Cyclic AMP-responsive element-binding protein 3-like protein 1 (CREB3L1) belongs to a family of transcription factors that are synthesized as membrane-bound precursors in the endoplasmic reticulum (ER) and then transported to the Golgi where they are activated through regulated intramembrane proteolysis (RIP). Also it participates in ER-stress response in astrocytes in the central nervous system. It may have a role in gliosis, and involves in activation of transcription through box-B element but not CRE. CREB3L1 acts as a transcription repressor in proliferation of virus-infected cell. The full-length precursor form (approximately 84 kDa) of CREB3L1 and the matured form of CREB3L1 is 58 kDa. (PMID: 20668028)

Storage

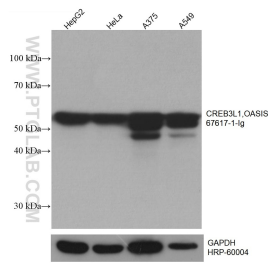
Storage:
Store at -20°C. Stable for one year after shipment.
Storage Buffer:
PBS with 0.02% sodium azide and 50% glycerol pH 7.3.
Aliquoting is unnecessary for -20°C storage

*** 20ul sizes contain 0.1% BSA

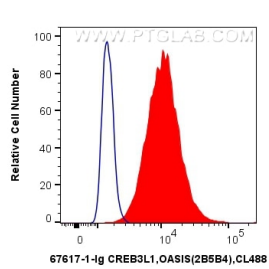
For technical support and original validation data for this product please contact:
T: 1 (888) 4PTGLAB (1-888-478-4522) (toll free in USA), or 1(312) 455-8498 (outside USA)
E: proteintech@ptglab.com
W: ptglab.com

This product is exclusively available under Proteintech Group brand and is not available to purchase from any other manufacturer.

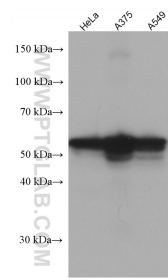
Selected Validation Data



Various lysates were subjected to SDS PAGE followed by western blot with 67617-1-Ig (CREB3L1, OASIS antibody) at dilution of 1:50000 incubated at room temperature for 1.5 hours. The membrane was stripped and reblotted with HRP-conjugated GAPDH Monoclonal antibody (HRP-60004) as loading control.



1X10⁶ HepG2 cells were intracellularly stained with 0.5 ug Anti-Human CREB3L1, OASIS (67617-1-Ig, Clone:2B5B4) and CoraLite®488-Conjugated Goat Anti-Mouse IgG(H+L) at dilution 1:1000 (red), or 0.5 ug Control Antibody. Cells were fixed with 4% PFA and permeabilized with Flow Cytometry Perm Buffer (PF00011-C).



Various lysates were subjected to SDS PAGE followed by western blot with 67617-1-Ig (CREB3L1, OASIS antibody) at dilution of 1:5000 incubated at room temperature for 1.5 hours.