

PSAT1 Monoclonal antibody

Catalog Number: 67619-1-Ig **4 Publications**

Basic Information

Catalog Number: 67619-1-Ig	GenBank Accession Number: BC001618	Purification Method: Protein G purification
Size: 150ul , Concentration: 1500 ug/ml by Nanodrop and 1000 ug/ml by Bradford method using BSA as the standard;	GeneID (NCBI): 29968	CloneNo.: 1B2C9
Source: Mouse	UNIPROT ID: Q9Y617	Recommended Dilutions: WB 1:5000-1:50000 IHC 1:250-1:1000 IF/ICC 1:400-1:1600
Isotype: IgG1	Full Name: phosphoserine aminotransferase 1	
Immunogen Catalog Number: AG14076	Calculated MW: 370 aa, 40 kDa	
	Observed MW: 37-40 kDa	

Applications

Tested Applications: WB, IHC, IF/ICC, ELISA	Positive Controls:
Cited Applications: WB, IHC	WB : HeLa cells, HEK-293 cells, Jurkat cells, K-562 cells, NIH/3T3 cells, pig brain tissue, rabbit brain tissue, rat brain tissue, mouse brain tissue
Species Specificity: Human, mouse, rat, pig	IHC : human breast cancer tissue,
Cited Species: human	IF/ICC : HCT 116 cells,
Note-IHC: suggested antigen retrieval with TE buffer pH 9.0; (*) Alternatively, antigen retrieval may be performed with citrate buffer pH 6.0	

Background Information

PSAT1, also named as PSA and PSAT, belongs to the class-V pyridoxal-phosphate-dependent aminotransferase family and SerC subfamily. It catalyzes the reversible conversion of 3-phosphohydroxypyruvate to phosphoserine and of 3-hydroxy-2-oxo-4-phosphonooxybutanoate to phosphohydroxythreonine. PSAT1 represents a new interesting target for CRC therapy. (PMID:18221502) It may be implicated in altered serine metabolism and schizophrenia spectrum conditions. (PMID:20955740)

Notable Publications

Author	Pubmed ID	Journal	Application
Hui Jie	39948566	Cancer Metab	WB
Su Hwan Park	38825643	Exp Mol Med	WB
Liwen Feng	38512709	Cancer Biother Radiopharm	IHC

Storage

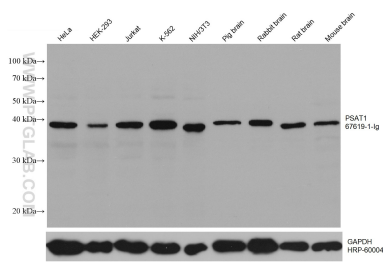
Storage:
Store at -20°C. Stable for one year after shipment.
Storage Buffer:
PBS with 0.02% sodium azide and 50% glycerol, pH7.3
Aliquoting is unnecessary for -20°C storage

*** 20ul sizes contain 0.1% BSA

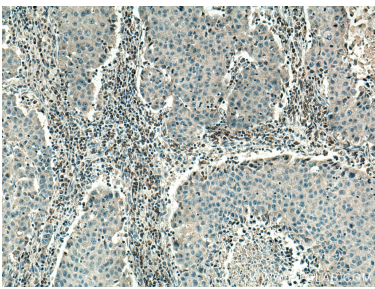
For technical support and original validation data for this product please contact:
T: 1 (888) 4PTGLAB (1-888-478-4522) (toll free in USA), or 1(312) 455-8498 (outside USA)
E: proteintech@ptglab.com
W: ptglab.com

This product is exclusively available under Proteintech Group brand and is not available to purchase from any other manufacturer.

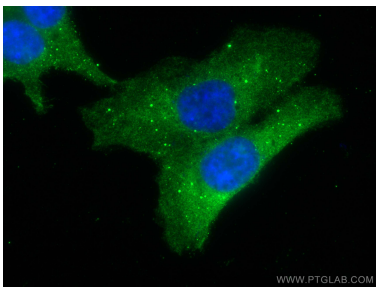
Selected Validation Data



Various lysates were subjected to SDS PAGE followed by western blot with 67619-1-Ig (PSAT1 antibody) at dilution of 1:20000 incubated at room temperature for 1.5 hours. The membrane was stripped and reblotted with HRP-conjugated GAPDH Monoclonal antibody (HRP-60004) as loading control.



Immunohistochemical analysis of paraffin-embedded human breast cancer tissue slide using 67619-1-Ig (PSAT1 antibody) at dilution of 1:500 (under 10x lens). Heat mediated antigen retrieval with Tris-EDTA buffer (pH 9.0).



Immunofluorescent analysis of (4% PFA) fixed HCT 116 cells using PSAT1 antibody (67619-1-Ig, Clone: 1B2C9) at dilution of 1:800 and CoraLite®488-Conjugated Goat Anti-Mouse IgG(H+L).