

WASF3 Monoclonal antibody

Catalog Number: 67620-1-Ig

Basic Information

Catalog Number: 67620-1-Ig	GenBank Accession Number: BC050283	Purification Method: Protein G purification
Size: 150ul , Concentration: 500 ug/ml by Bradford method using BSA as the standard;	GeneID (NCBI): 10810	CloneNo.: 3B7D10
Source: Mouse	UNIPROT ID: Q9UPY6	Recommended Dilutions: IHC 1:500-1:2000 IF-P 1:200-1:800
Isotype: IgG1	Full Name: WAS protein family, member 3	
Immunogen Catalog Number: AG29991	Calculated MW: 55 kDa	
	Observed MW: 50-55 and 66-70 kDa	

Applications

Tested Applications: IHC, IF-P, ELISA	Positive Controls:
Species Specificity: Human, Mouse, Rat, Pig, Rabbit	IHC : human liver cancer tissue,
Note-IHC: suggested antigen retrieval with TE buffer pH 9.0; (*) Alternatively, antigen retrieval may be performed with citrate buffer pH 6.0	IF-P : mouse brain tissue, human liver cancer tissue

Background Information

WASF3, also named WAVE3 or SCAR3, belongs to the SCAR/WAVE family. It plays a role in the regulation of cell morphology and cytoskeletal organization. WASF3 is associated with movement, invasion, and metastasis in different cancers such as breast cancer, gastric cancer, and prostate cancer. It has been shown that WASF3 levels are elevated in advanced-stage cancers compared to lower-grade tumors and normal tissue. The 67620-1-Ig antibody recognizes 50-55 kDa and 66-70 kDa proteins similar to the papers.(PMID: 21544801, 15826941, 31038356, 27432794, 31542393)

Storage

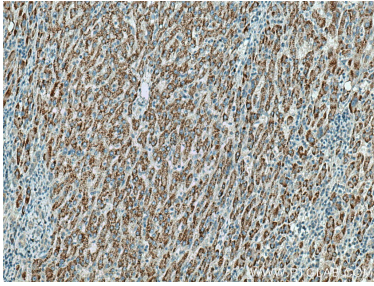
Storage:
Store at -20°C. Stable for one year after shipment.
Storage Buffer:
PBS with 0.02% sodium azide and 50% glycerol pH 7.3.
Aliquoting is unnecessary for -20°C storage

*** 20ul sizes contain 0.1% BSA

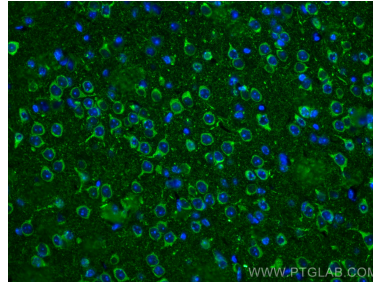
For technical support and original validation data for this product please contact:
T: 1 (888) 4PTGLAB (1-888-478-4522) (toll free in USA), or 1(312) 455-8498 (outside USA)
E: proteintech@ptglab.com
W: ptglab.com

This product is exclusively available under Proteintech Group brand and is not available to purchase from any other manufacturer.

Selected Validation Data



Immunohistochemical analysis of paraffin-embedded human liver cancer tissue slide using 67620-1-Ig (WASF3 antibody) at dilution of 1:1000 (under 10x lens). Heat mediated antigen retrieval with Tris-EDTA buffer (pH 9.0).



Immunofluorescent analysis of (4% PFA) fixed mouse brain tissue using WASF3 antibody (67620-1-Ig, Clone: 3B7D10) at dilution of 1:400 and CoraLite®488-Conjugated Goat Anti-Mouse IgG(H+L).