

For Research Use Only

SIX6 Monoclonal antibody

Catalog Number: 67622-1-Ig **1 Publications**



Basic Information

Catalog Number: 67622-1-Ig	GenBank Accession Number: BC069413	Purification Method: Protein G purification
Size: 150ul , Concentration: 867 ug/ml by Bradford method using BSA as the standard;	GeneID (NCBI): 4990	CloneNo.: 1C12E2
Source: Mouse	UNIPROT ID: O95475	Recommended Dilutions: WB 1:1000-1:4000
Isotype: IgG1	Full Name: SIX homeobox 6	
Immunogen Catalog Number: AG15496	Calculated MW: 246 aa, 28 kDa	
	Observed MW: 30-35 kDa	

Applications

Tested Applications: WB, ELISA	Positive Controls: WB : HUVEC cells, NCCIT cells
Cited Applications: WB	
Species Specificity: human	
Cited Species: mouse	

Background Information

SIX6, also named as OPTX2 or SIX9, is a 246 amino acid protein, which is expressed in the developing and adult retina. Defects in this gene are a cause of isolated microphthalmia with cataract type 2 (MCOPCT2).

Notable Publications

Author	Pubmed ID	Journal	Application
Zhonghua Xu	39779741	Sci Rep	WB

Storage

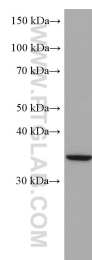
Storage:
Store at -20°C. Stable for one year after shipment.
Storage Buffer:
PBS with 0.02% sodium azide and 50% glycerol, pH7.3
Aliquoting is unnecessary for -20°C storage

*** 20ul sizes contain 0.1% BSA

For technical support and original validation data for this product please contact:
T: 1 (888) 4PTGLAB (1-888-478-4522) (toll free in USA), or 1(312) 455-8498 (outside USA)
E: proteintech@ptglab.com
W: ptglab.com

This product is exclusively available under Proteintech Group brand and is not available to purchase from any other manufacturer.

Selected Validation Data



HUVEC cells were subjected to SDS PAGE followed by western blot with 67622-1-Ig (SIX6 antibody) at dilution of 1:2000 incubated at room temperature for 1.5 hours.