

For Research Use Only

# SIX6 Monoclonal antibody

Catalog Number: 67622-1-Ig



## Basic Information

Catalog Number:

67622-1-Ig

Size:

150ul , Concentration: 867 ug/ml by Bradford method using BSA as the standard;

Source:

Mouse

Isotype:

IgG1

Immunogen Catalog Number:

AG15496

GenBank Accession Number:

BC069413

GeneID (NCBI):

4990

UNIPROT ID:

O95475

Full Name:

SIX homeobox 6

Calculated MW:

246 aa, 28 kDa

Observed MW:

30-35 kDa

Purification Method:

Protein A purification

CloneNo.:

1C12E2

Recommended Dilutions:

WB 1:1000-1:4000

## Applications

Tested Applications:

WB, ELISA

Species Specificity:

Human

Positive Controls:

WB : HUVEC cells, NCCIT cells

## Background Information

SIX6, also named as OPTX2 or SIX9, is a 246 amino acid protein, which is expressed in the developing and adult retina. Defects in this gene are a cause of isolated microphthalmia with cataract type 2 (MCOPT2).

## Storage

Storage:

Store at -20°C. Stable for one year after shipment.

Storage Buffer:

PBS with 0.02% sodium azide and 50% glycerol pH 7.3.

Aliquoting is unnecessary for -20°C storage

\*\*\* 20ul sizes contain 0.1% BSA

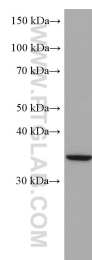
For technical support and original validation data for this product please contact:

T: 1 (888) 4PTGLAB (1-888-478-4522) (toll free in USA), or 1(312) 455-8498 (outside USA)

E: [proteintech@ptglab.com](mailto:proteintech@ptglab.com)  
W: [ptglab.com](http://ptglab.com)

This product is exclusively available under Proteintech Group brand and is not available to purchase from any other manufacturer.

## Selected Validation Data



HUVEC cells were subjected to SDS PAGE followed by western blot with 67622-1-Ig (SIX6 antibody) at dilution of 1:2000 incubated at room temperature for 1.5 hours.