

For Research Use Only

SIX6 Monoclonal antibody, PBS Only

Catalog Number: 67622-1-PBS



Basic Information

Catalog Number:

67622-1-PBS

Size:

100ug , Concentration: 1 mg/ml by Nanodrop;

Source:

Mouse

Isotype:

IgG1

Immunogen Catalog Number:

AG15496

GenBank Accession Number:

BC069413

GeneID (NCBI):

4990

UNIPROT ID:

O95475

Full Name:

SIX homeobox 6

Calculated MW:

246 aa, 28 kDa

Observed MW:

30-35 kDa

Purification Method:

Protein A purification

CloneNo.:

1C12E2

Applications

Tested Applications:

WB, Indirect ELISA

Species Specificity:

Human

Background Information

SIX6, also named as OPTX2 or SIX9, is a 246 amino acid protein, which is expressed in the developing and adult retina. Defects in this gene are a cause of isolated microphthalmia with cataract type 2 (MCOPT2).

Storage

Storage:

Store at -80°C.

Storage Buffer:

PBS Only

For technical support and original validation data for this product please contact:

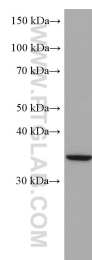
T: 1 (888) 4PTGLAB (1-888-478-4522) (toll free in USA), or 1(312) 455-8498 (outside USA)

E: proteintech@ptglab.com

W: ptglab.com

This product is exclusively available under Proteintech Group brand and is not available to purchase from any other manufacturer.

Selected Validation Data



HUVEC cells were subjected to SDS PAGE followed by western blot with 67622-1-Ig (SIX6 antibody) at dilution of 1:2000 incubated at room temperature for 1.5 hours. This data was developed using the same antibody clone with 67622-1-PBS in a different storage buffer formulation.