

For Research Use Only

# SORD Monoclonal antibody

Catalog Number: 67625-1-Ig **2 Publications**



## Basic Information

<b>Catalog Number:</b> 67625-1-Ig	<b>GenBank Accession Number:</b> BC021085	<b>Purification Method:</b> Protein A purification
<b>Size:</b> 150ul , Concentration: 1700 ug/ml by Nanodrop and 1000 ug/ml by Bradford method using BSA as the standard;	<b>GeneID (NCBI):</b> 6652	<b>CloneNo.:</b> 4A8E1
<b>Source:</b> Mouse	<b>UNIPROT ID:</b> Q00796	<b>Recommended Dilutions:</b> WB 1:5000-1:50000
<b>Isotype:</b> IgG2b	<b>Full Name:</b> sorbitol dehydrogenase	
<b>Immunogen Catalog Number:</b> AG8651	<b>Calculated MW:</b> 357 aa, 38 kDa	
	<b>Observed MW:</b> 38 kDa	

## Applications

<b>Tested Applications:</b> WB, ELISA	<b>Positive Controls:</b> WB : LNCaP cells, HSC-T6 cells, PC-12 cells, NIH/3T3 cells, Hela cells, HepG2 cells, Jurkat cells, K-562 cells
<b>Cited Applications:</b> WB	
<b>Species Specificity:</b> Human, rat, mouse	
<b>Cited Species:</b> human, mouse	

## Background Information

SORD(Sorbitol dehydrogenase) is also named as L-iditol 2-dehydrogenase and belongs to the zinc-containing alcohol dehydrogenase family. It catalyzes the interconversion of polyols and their corresponding ketoses, and together with aldose reductase, makes up the sorbitol pathway that is believed to play an important role in the development of diabetic complications. This protein can form a homotetramer(PMID:12962626). Measurement of SORD is a specific indicator of liver cell damage and parenchymal.

## Notable Publications

Author	Pubmed ID	Journal	Application
Semira R. Ortiz	36276829	Front Nutr	WB
Semira R Ortiz	37245661	J Nutr	WB

## Storage

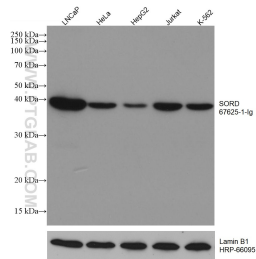
**Storage:**  
Store at -20°C. Stable for one year after shipment.  
**Storage Buffer:**  
PBS with 0.02% sodium azide and 50% glycerol pH 7.3.  
**Aliquoting is unnecessary for -20°C storage**

\*\*\* 20ul sizes contain 0.1% BSA

For technical support and original validation data for this product please contact:  
T: 1 (888) 4PTGLAB (1-888-478-4522) (toll free in USA), or 1(312) 455-8498 (outside USA)  
E: [proteintech@ptglab.com](mailto:proteintech@ptglab.com)  
W: [ptglab.com](http://ptglab.com)

This product is exclusively available under Proteintech Group brand and is not available to purchase from any other manufacturer.

## Selected Validation Data



Various lysates were subjected to SDS PAGE followed by western blot with 67625-1-Ig (SORD antibody) at dilution of 1:20000 incubated at room temperature for 1.5 hours. The membrane was stripped and reblotted with HRP-conjugated Lamin B1 Monoclonal antibody (HRP-66095) as loading control.