

For Research Use Only

CD24 Monoclonal antibody

Catalog Number: 67627-1-Ig **1 Publications**



Basic Information

Catalog Number: 67627-1-Ig	GenBank Accession Number: BC007674	Purification Method: Protein A purification
Size: 150ul , Concentration: 1000 ug/ml by Nanodrop;	GeneID (NCBI): 100133941	CloneNo.: 1H5C4
Source: Mouse	UNIPROT ID: P25063	Recommended Dilutions: WB 1:5000-1:50000 IF/ICC 1:200-1:800
Isotype: IgG1	Full Name: CD24 molecule	
Immunogen Catalog Number: AG11679	Calculated MW: 8 kDa	
	Observed MW: 42 kDa	

Applications

Tested Applications: WB, IF/ICC, ELISA	Positive Controls: WB : MCF-7 cells, Raji cells, Ramos cells, Daudi cells, Jurkat cells, K-562 cells, HL-60 cells IF/ICC : Daudi cells,
Cited Applications: WB	
Species Specificity: human	
Cited Species: human	

Background Information

CD24 (known as heat stable antigen) is a small highly glycosylated GPI-linked sialoprotein. It is normally expressed at the surface of most B lymphocytes and differentiating neuroblasts, and it is also up-regulated in a wide variety of cancers. Studies have shown that CD24 functions in the regulation of B-cell apoptosis, leukocyte signal transduction, and leukocyte adhesion. Since it is highly glycosylated, the apparent molecular weight of CD24 could be variable, ranging from 30 kDa to 70 kDa. (Ref: Akihiko Sano, MD., 2009)

Notable Publications

Author	Pubmed ID	Journal	Application
Xudong Zhu	38164371	Breast Cancer (Dove Med Press)	WB

Storage

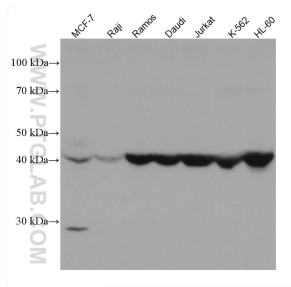
Storage:
Store at -20°C. Stable for one year after shipment.
Storage Buffer:
PBS with 0.02% sodium azide and 50% glycerol pH 7.3.
Aliquoting is unnecessary for -20°C storage

*** 20ul sizes contain 0.1% BSA

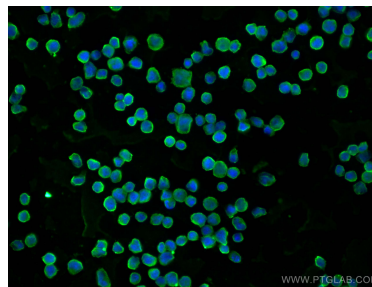
For technical support and original validation data for this product please contact:
T: 1 (888) 4PTGLAB (1-888-478-4522) (toll free in USA), or 1(312) 455-8498 (outside USA)
E: proteintech@ptglab.com
W: ptglab.com

This product is exclusively available under Proteintech Group brand and is not available to purchase from any other manufacturer.

Selected Validation Data



Various lysates were subjected to SDS PAGE followed by western blot with 67627-1-Ig (CD24 antibody) at dilution of 1:10000 incubated at room temperature for 1.5 hours.



Immunofluorescent analysis of (4% PFA) fixed Daudi cells using CD24 antibody (67627-1-Ig, Clone: 1H5C4) at dilution of 1:400 and Multi-rAb CoraLite® Plus 488-Goat Anti-Mouse Recombinant Secondary Antibody (H+L) (RGAM002).