

For Research Use Only

ICAM2/CD102 Monoclonal antibody

Catalog Number: 67628-1-Ig



Basic Information

Catalog Number: 67628-1-Ig	GenBank Accession Number: BC003097	Purification Method: Protein A purification
Size: 150ul , Concentration: 1991 ug/ml by Nanodrop and 1000 ug/ml by Bradford method using BSA as the standard;	GeneID (NCBI): 3384	CloneNo.: 1H3C6
Source: Mouse	UNIPROT ID: P13598	Recommended Dilutions: WB 1:1000-1:6000 IF/ICC 1:995-1:3982
Isotype: IgG2a	Full Name: intercellular adhesion molecule 2	
Immunogen Catalog Number: AG29441	Calculated MW: 31 kDa	
	Observed MW: 55-60 kDa	

Applications

Tested Applications: WB, IF/ICC, ELISA	Positive Controls: WB : human peripheral blood platelets, Jurkat cells IF/ICC : HUVEC cells,
Species Specificity: human	

Background Information

ICAM2 is a cell adhesion protein having important roles in cell migration, especially during inflammation when leukocytes cross the endothelium. Initially described as a receptor for lymphocyte function-associated antigen-1 (LFA1), ICAM2 may play a role in lymphocyte recirculation by blocking LFA-1-dependent cell adhesion. It mediates adhesive interactions important for antigen-specific immune response, NK-cell mediated clearance, lymphocyte recirculation, and other cellular interactions important for immune response and surveillance.

Storage

Storage:
Store at -20°C. Stable for one year after shipment.
Storage Buffer:
PBS with 0.02% sodium azide and 50% glycerol pH 7.3.
Aliquoting is unnecessary for -20°C storage

*** 20ul sizes contain 0.1% BSA

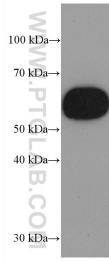
For technical support and original validation data for this product please contact:

T: 1 (888) 4PTGLAB (1-888-478-4522) (toll free in USA), or 1(312) 455-8498 (outside USA)

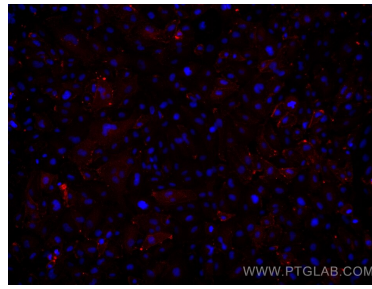
E: proteintech@ptglab.com
W: ptglab.com

This product is exclusively available under Proteintech Group brand and is not available to purchase from any other manufacturer.

Selected Validation Data



human peripheral blood platelets were subjected to SDS PAGE followed by western blot with 67628-1-Ig (ICAM2 antibody) at dilution of 1:3000 incubated at room temperature for 1.5 hours.



Immunofluorescent analysis of (4% PFA) fixed HUVEC cells using ICAM2/CD102 antibody (67628-1-Ig, Clone: 1H3C6) at dilution of 1:1991 and Multi-rAb CoraLite® Plus 594-Goat Anti-Mouse Recombinant Secondary Antibody (H+L) (Cat.NO. RGAM004).