

# PSME3 Monoclonal antibody

Catalog Number: 67629-1-Ig

## Basic Information

<b>Catalog Number:</b> 67629-1-Ig	<b>GenBank Accession Number:</b> BC001423	<b>Purification Method:</b> Protein G purification
<b>Size:</b> 150ul , Concentration: 2100 ug/ml by Nanodrop and 1000 ug/ml by Bradford method using BSA as the standard;	<b>GeneID (NCBI):</b> 10197	<b>CloneNo.:</b> 2A8E8
<b>Source:</b> Mouse	<b>UNIPROT ID:</b> P61289	<b>Recommended Dilutions:</b> WB 1:1000-1:6000 IHC 1:250-1:1000
<b>Isotype:</b> IgG1	<b>Full Name:</b> proteasome (prosome, macropain) activator subunit 3 (PA28 gamma; Ki)	
<b>Immunogen Catalog Number:</b> AG6716	<b>Calculated MW:</b> 30 kDa	
	<b>Observed MW:</b> 32 kDa	

## Applications

<b>Tested Applications:</b> WB, IHC, ELISA	<b>Positive Controls:</b>
<b>Species Specificity:</b> Human, Rat	<b>WB :</b> LNCaP cells, HeLa cells, HepG2 cells, K-562 cells, HSC-T6 cells
<b>Note-IHC:</b> suggested antigen retrieval with <b>TE buffer pH 9.0; (*) Alternatively, antigen retrieval may be performed with citrate buffer pH 6.0</b>	<b>IHC :</b> human liver cancer tissue,

## Background Information

PSME3 gene encodes proteasome activator complex subunit 3, which is also called REG-gamma or PA28-gamma. REG-gamma activates the trypsin-like catalytic subunit of the proteasome thus is a proteasome regulator. MDM2-TP53 interaction which promotes ubiquitination- and MDM2-dependent proteasomal degradation of TP53, may be promoted by REG-gamma resulting in inhibited apoptosis after DNA damage. REG-gamma may also be involved in cell cycle regulation.

## Storage

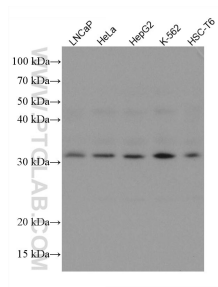
**Storage:**  
Store at -20°C. Stable for one year after shipment.  
**Storage Buffer:**  
PBS with 0.02% sodium azide and 50% glycerol pH 7.3.  
**Aliquoting is unnecessary for -20°C storage**

\*\*\* 20ul sizes contain 0.1% BSA

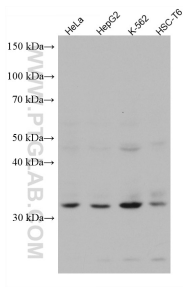
For technical support and original validation data for this product please contact:  
T: 1 (888) 4PTGLAB (1-888-478-4522) (toll free in USA), or 1(312) 455-8498 (outside USA)  
E: [proteintech@ptglab.com](mailto:proteintech@ptglab.com)  
W: [ptglab.com](http://ptglab.com)

This product is exclusively available under Proteintech Group brand and is not available to purchase from any other manufacturer.

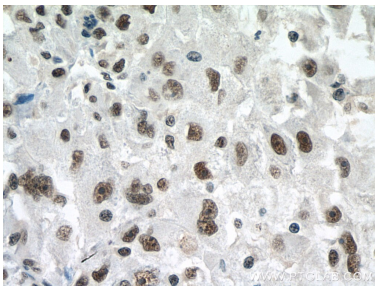
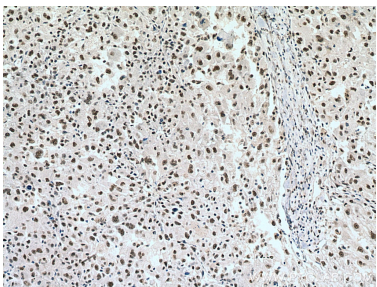
## Selected Validation Data



Various lysates were subjected to SDS PAGE followed by western blot with 67629-1-Ig (PSME3 antibody) at dilution of 1:3000 incubated at room temperature for 1.5 hours.



Various lysates were subjected to SDS PAGE followed by western blot with 67629-1-Ig (PSME3 antibody) at dilution of 1:10000 incubated at room temperature for 1.5 hours.



Immunohistochemical analysis of paraffin-embedded human liver cancer tissue slide using 67629-1-Ig (PSME3 antibody) at dilution of 1:500 (under 40x lens). Heat mediated antigen retrieval with Tris-EDTA buffer (pH 9.0).