

For Research Use Only

CPS1 Monoclonal antibody

Catalog Number: 67630-1-Ig **1 Publications**



Basic Information

| | | |
|--|--|---|
| Catalog Number: 67630-1-Ig | GenBank Accession Number: BC140943 | Purification Method: Protein A purification |
| Size: 150ul , Concentration: 2300 ug/ml by Nanodrop and 1000 ug/ml by Bradford method using BSA as the standard; | GeneID (NCBI): 1373 | CloneNo.: 2A12A4 |
| Source: Mouse | UNIPROT ID: P31327 | Recommended Dilutions: WB 1:500-1:8000 |
| Isotype: IgG1 | Full Name: carbamoyl-phosphate synthetase 1, mitochondrial | |
| | Calculated MW: 165 kDa | |
| | Observed MW: 140-165 kDa | |

Applications

| | |
|--|--|
| Tested Applications: WB, ELISA | Positive Controls: WB : mouse liver tissue, HeLa cells, rat liver tissue |
| Cited Applications: WB | |
| Species Specificity: human, mouse, rat | |
| Cited Species: rabbit | |

Background Information

CPS1 is an enzyme that catalyzes the first committed step of the hepatic urea cycle, which is important in the removal of excess urea from cells. Expressed primarily in the liver and small intestine, CPS1 can be used as a marker for mitochondria in these tissues. In addition, CPS1 expression appears to be lost in adenocarcinomas of the small intestine.

Notable Publications

| Author | Pubmed ID | Journal | Application |
|---------------|-----------|------------|-------------|
| Ruiguang Gong | 39693353 | J Anim Sci | WB |

Storage

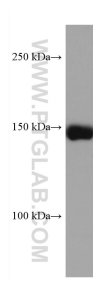
Storage:
Store at -20°C. Stable for one year after shipment.
Storage Buffer:
PBS with 0.02% sodium azide and 50% glycerol, pH7.3
Aliquoting is unnecessary for -20°C storage

*** 20ul sizes contain 0.1% BSA

For technical support and original validation data for this product please contact:
T: 1 (888) 4PTGLAB (1-888-478-4522) (toll free in USA), or 1(312) 455-8498 (outside USA)
E: proteintech@ptglab.com
W: ptglab.com

This product is exclusively available under Proteintech Group brand and is not available to purchase from any other manufacturer.

Selected Validation Data



mouse liver tissue were subjected to SDS PAGE followed by western blot with 67630-1-Ig (CPS1 antibody) at dilution of 1:5000 incubated at room temperature for 1.5 hours.