

For Research Use Only

CPS1 Monoclonal antibody

Catalog Number: 67630-1-Ig



Basic Information

Catalog Number:

67630-1-Ig

GenBank Accession Number:

BC140943

Purification Method:

Protein G purification

Size:

150ul, Concentration: 2300 ug/ml by 1373
Nanodrop and 1000 ug/ml by Bradford
method using BSA as the standard;

GeneID (NCBI):

1373

CloneNo.:

2A12A4

Source:

Mouse

UNIPROT ID:

P31327

Recommended Dilutions:

WB 1:500-1:8000

Isotype:

IgG1

Full Name:

carbamoyl-phosphate synthetase 1,
mitochondrial

Calculated MW:

165 kDa

Observed MW:

140-165 kDa

Applications

Tested Applications:

WB, ELISA

Positive Controls:

WB: mouse liver tissue, HeLa cells, rat liver tissue

Species Specificity:

Human, mouse, rat

Background Information

CPS1 is an enzyme that catalyzes the first committed step of the hepatic urea cycle, which is important in the removal of excess urea from cells. Expressed primarily in the liver and small intestine, CPS1 can be used as a marker for mitochondria in these tissues. In addition, CPS1 expression appears to be lost in adenocarcinomas of the small intestine.

Storage

Storage:

Store at -20°C.

Storage Buffer:

PBS with 0.02% sodium azide and 50% glycerol pH 7.3.

Aliquoting is unnecessary for -20°C storage

*** 20ul sizes contain 0.1% BSA

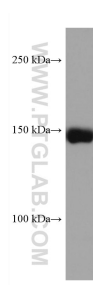
For technical support and original validation data for this product please contact:

T: 1 (888) 4PTGLAB (1-888-478-4522) (toll free
in USA), or 1(312) 455-8498 (outside USA)

E: proteintech@ptglab.com
W: ptglab.com

This product is exclusively available under Proteintech Group brand and is not available to purchase from any other manufacturer.

Selected Validation Data



mouse liver tissue were subjected to SDS PAGE followed by western blot with 67630-1-Ig (CPS1 antibody) at dilution of 1:5000 incubated at room temperature for 1.5 hours.