

For Research Use Only

# Ch-TOG Monoclonal antibody

Catalog Number: 67631-1-Ig



## Basic Information

|   |  |  |
|---|--|--|
| <b>Catalog Number:</b><br>67631-1-Ig  | <b>GenBank Accession Number:</b><br>BC120869           | <b>Purification Method:</b><br>Protein G purification                  |
| <b>Size:</b><br>150ul , Concentration: 1000 µg/ml by Nanodrop and 500 µg/ml by Bradford method using BSA as the standard; | <b>GeneID (NCBI):</b><br>9793                          | <b>CloneNo.:</b><br>1H5G1  |
| <b>Source:</b><br>Mouse   | <b>Full Name:</b><br>cytoskeleton associated protein 5 | <b>Recommended Dilutions:</b><br>WB 1:5000-1:50000<br>IF 1:2000-1:8000 |
| <b>Isotype:</b><br>IgG1   | <b>Observed MW:</b><br>220-240 kDa                     |  |
| <b>Immunogen Catalog Number:</b><br>AG28770   |  |  |

## Applications

|   |  |
|---|--|
| <b>Tested Applications:</b><br>IF, WB, ELISA          | <b>Positive Controls:</b>  |
| <b>Species Specificity:</b><br>Human, mouse, rat, pig | <b>WB :</b> pig brain tissue, HeLa cells, HepG2 cells, NCCIT cells, rat brain tissue, mouse brain tissue |
|   | <b>IF :</b> HepG2 cells,   |

## Background Information

Ch-TOG (colonic hepatic tumor-overexpressed gene), also known as XMAP215 or CKAP5, is a microtubule polymerase which can promotes cytoplasmic microtubule nucleation and elongation. Through interacting with Aurora-A and TACC3, it plays a major role in organizing spindle poles.

## Storage

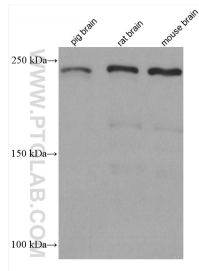
**Storage:**  
Store at -20°C. Stable for one year after shipment.  
**Storage Buffer:**  
PBS with 0.02% sodium azide and 50% glycerol pH 7.3.  
Aliquoting is unnecessary for -20°C storage

\*\*\* 20ul sizes contain 0.1% BSA

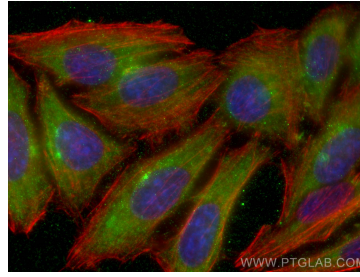
For technical support and original validation data for this product please contact:  
T: 1 (888) 4PTGLAB (1-888-478-4522) (toll free in USA), or 1(312) 455-8498 (outside USA)  
E: proteintech@ptglab.com  
W: ptglab.com

This product is exclusively available under Proteintech Group brand and is not available to purchase from any other manufacturer.

## Selected Validation Data



Various lysates were subjected to SDS PAGE followed by western blot with 67631-1-Ig (CKAP5 antibody) at dilution of 1:10000 incubated at room temperature for 1.5 hours.



Immunofluorescent analysis of (-20°C Ethanol) fixed HepG2 cells using Ch-TOG antibody (67631-1-Ig, Clone: 1H5G1) at dilution of 1:4000 and Coralite® 488-Conjugated AffiniPure Goat Anti-Mouse IgG(H+L), CL594-Phalloidin (red).