

For Research Use Only

# Ch-TOG Monoclonal antibody, PBS Only (Capture/Detector)

Catalog Number: 67631-1-PBS



## Basic Information

<b>Catalog Number:</b> 67631-1-PBS	<b>GenBank Accession Number:</b> BC120869	<b>Purification Method:</b> Protein A purification
<b>Size:</b> 100ug, Concentration: 1mg/ml by Nanodrop;	<b>GeneID (NCBI):</b> 9793	<b>CloneNo.:</b> 1H5G1
<b>Source:</b> Mouse	<b>UNIPROT ID:</b> Q14008	
<b>Isotype:</b> IgG1	<b>Full Name:</b> cytoskeleton associated protein 5	
<b>Immunogen Catalog Number:</b> AG28770	<b>Observed MW:</b> 220-240 kDa	

## Applications

**Tested Applications:**  
WB, IHC, IF/ICC, Cytometric bead array, Indirect ELISA

**Species Specificity:**  
human, mouse, rat, pig

## Product Information

67631-1-PBS targets Ch-TOG as part of a matched antibody pair:

MP50224-1: 67631-2-PBS capture and 67631-1-PBS detection (validated in Cytometric bead array)

MP50224-2: 67631-1-PBS capture and 67631-3-PBS detection (validated in Cytometric bead array)

Unconjugated mouse monoclonal antibody pair in PBS only (BSA and azide free) storage buffer at a concentration of 1 mg/mL, ready for conjugation.

This conjugation ready format makes antibodies ideal for use in many applications including: ELISAs, multiplex assays requiring matched pairs, mass cytometry, and multiplex imaging applications. Antibody use should be optimized by the end user for each application and assay.

## Background Information

Ch-TOG (colonic hepatic tumor-overexpressed gene), also known as XMAP215 or CKAP5, is a microtubule polymerase which can promotes cytoplasmic microtubule nucleation and elongation. Through interacting with Aurora-A and TACC3, it plays a major role in organizing spindle poles.

## Storage

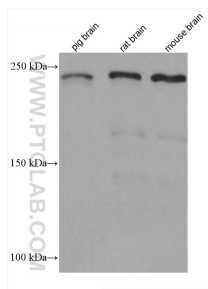
**Storage:**  
Store at -80°C.

**Storage Buffer:**  
PBS Only

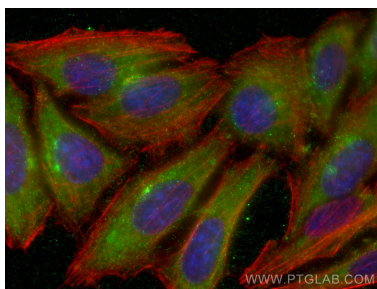
For technical support and original validation data for this product please contact:  
T: 1 (888) 4PTGLAB (1-888-478-4522) (toll free in USA), or 1(312) 455-8498 (outside USA)  
E: [proteintech@ptglab.com](mailto:proteintech@ptglab.com)  
W: [ptglab.com](http://ptglab.com)

This product is exclusively available under Proteintech Group brand and is not available to purchase from any other manufacturer.

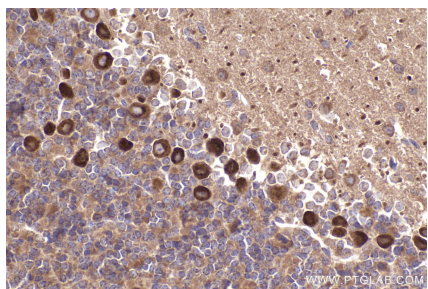
Selected Validation Data



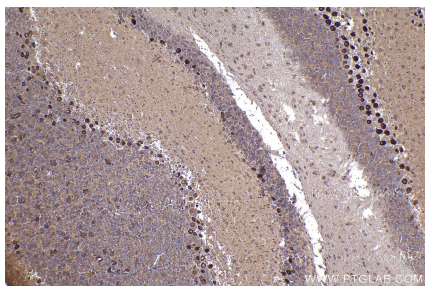
Various lysates were subjected to SDS PAGE followed by western blot with 67631-1-Ig (CKAP5 antibody) at dilution of 1:10000 incubated at room temperature for 1.5 hours. This data was developed using the same antibody clone with 67631-1-PBS in a different storage buffer formulation.



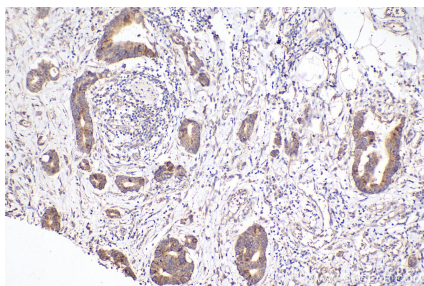
Immunofluorescent analysis of (-20°C Ethanol) fixed HepG2 cells using Ch-TOG antibody (67631-1-Ig, Clone: 1H5G1 ) at dilution of 1:4000 and CoraLite® 488-Conjugated AffiniPure Goat Anti-Mouse IgG(H+L), CL594-Phalloidin (red). This data was developed using the same antibody clone with 67631-1-PBS in a different storage buffer formulation.



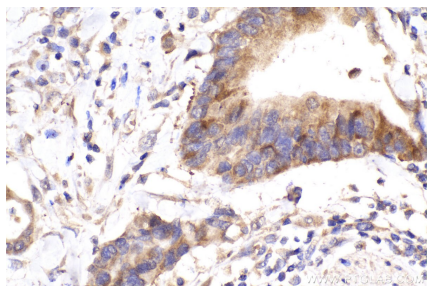
Immunohistochemical analysis of paraffin-embedded mouse cerebellum tissue slide using 67631-1-Ig (Ch-TOG antibody) at dilution of 1:500 (under 40x lens). Heat mediated antigen retrieval with Tris-EDTA buffer (pH 9.0). This data was developed using the same antibody clone with 67631-1-PBS in a different storage buffer formulation.



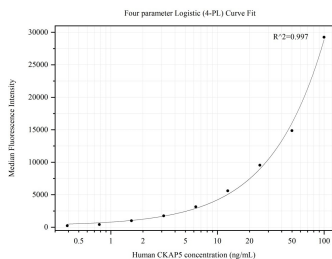
Immunohistochemical analysis of paraffin-embedded mouse cerebellum tissue slide using 67631-1-Ig (Ch-TOG antibody) at dilution of 1:500 (under 10x lens). Heat mediated antigen retrieval with Tris-EDTA buffer (pH 9.0). This data was developed using the same antibody clone with 67631-1-PBS in a different storage buffer formulation.



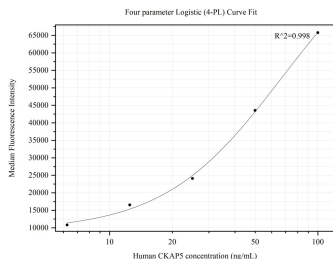
Immunohistochemical analysis of paraffin-embedded human rectal cancer tissue slide using 67631-1-Ig (Ch-TOG antibody) at dilution of 1:1000 (under 10x lens). Heat mediated antigen retrieval with Tris-EDTA buffer (pH 9.0). This data was developed using the same antibody clone with 67631-1-PBS in a different storage buffer formulation.



Immunohistochemical analysis of paraffin-embedded human rectal cancer tissue slide using 67631-1-Ig (Ch-TOG antibody) at dilution of 1:1000 (under 40x lens). Heat mediated antigen retrieval with Tris-EDTA buffer (pH 9.0). This data was developed using the same antibody clone with 67631-1-PBS in a different storage buffer formulation.



Cytometric bead array standard curve of MP50224-1, CKAP5 Monoclonal Matched Antibody Pair, PBS Only. Capture antibody: 67631-2-PBS. Detection antibody: 67631-1-PBS. Standard:Ag28770. Range: 0.391-100 ng/mL



Cytometric bead array standard curve of MP50224-2, CKAP5 Monoclonal Matched Antibody Pair, PBS Only. Capture antibody: 67631-1-PBS. Detection antibody: 67631-3-PBS. Standard:Ag28770. Range: 6.25-100 ng/mL