

For Research Use Only

# Maspin Monoclonal antibody

Catalog Number: 67633-1-Ig



## Basic Information

<b>Catalog Number:</b> 67633-1-Ig	<b>GenBank Accession Number:</b> BC020713	<b>Purification Method:</b> Protein A purification
<b>Size:</b> 150ul , Concentration: 1600 µg/ml by Nanodrop and 1000 µg/ml by Bradford method using BSA as the standard;	<b>GeneID (NCBI):</b> 5268	<b>CloneNo.:</b> 3G5A3
<b>Source:</b> Mouse	<b>Full Name:</b> serpin peptidase inhibitor, clade B (ovalbumin), member 5	<b>Recommended Dilutions:</b> WB 1:1000-1:6000 IHC 1:150-1:600
<b>Isotype:</b> IgG2a	<b>Calculated MW:</b> 375 aa, 42 kDa	
<b>Immunogen Catalog Number:</b> AG19129	<b>Observed MW:</b> 38-40 kDa	

## Applications

### Tested Applications:

IHC, WB, ELISA

### Species Specificity:

Human

**Note-IHC: suggested antigen retrieval with  
TE buffer pH 9.0; (\*) Alternatively, antigen  
retrieval may be performed with citrate  
buffer pH 6.0**

### Positive Controls:

WB : HepG2 cells, Human saliva, HeLa cells, A431 cells

IHC : human oesophagus cancer tissue,

## Background Information

SERPINB5, also named as PI-5, Maspin and Serpin B5, belongs to the serpin family and Ov-serpin subfamily. It is a tumor suppressor. It blocks the growth, invasion, and metastatic properties of mammary tumors. As it does not undergo the S (stressed) to R (relaxed) conformational transition characteristic of active serpins, SERPINB5 exhibits no serine protease inhibitory activity.

## Storage

### Storage:

Store at -20°C.

### Storage Buffer:

PBS with 0.02% sodium azide and 50% glycerol pH 7.3.

Aliquoting is unnecessary for -20°C storage

\*\*\* 20ul sizes contain 0.1% BSA

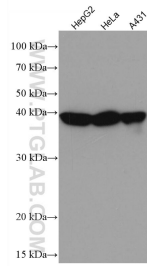
For technical support and original validation data for this product please contact:

T: 1 (888) 4PTGLAB (1-888-478-4522) (toll free  
in USA), or 1(312) 455-8498 (outside USA)

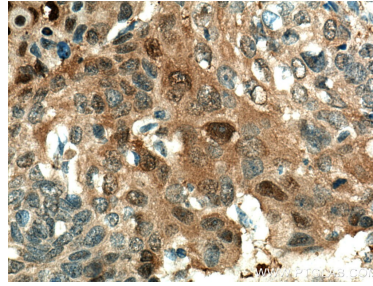
E: proteintech@ptglab.com  
W: ptglab.com

This product is exclusively available under Proteintech Group brand and is not available to purchase from any other manufacturer.

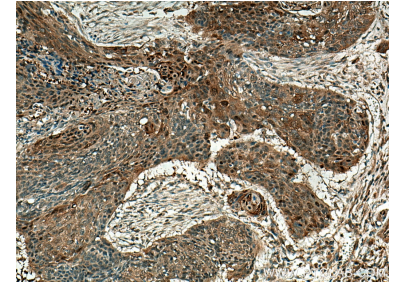
## Selected Validation Data



Various lysates were subjected to SDS PAGE followed by western blot with 67633-1-Ig (Maspin antibody) at dilution of 1:3000 incubated at room temperature for 1.5 hours.



Immunohistochemical analysis of paraffin-embedded human oesophagus cancer tissue slide using 67633-1-Ig (Maspin antibody) at dilution of 1:300 (under 40x lens). Heat mediated antigen retrieval with Tris-EDTA buffer (pH 9.0).



Immunohistochemical analysis of paraffin-embedded human oesophagus cancer tissue slide using 67633-1-Ig (Maspin antibody) at dilution of 1:300 (under 10x lens). Heat mediated antigen retrieval with Tris-EDTA buffer (pH 9.0).