

For Research Use Only

GSTM3 Monoclonal antibody

Catalog Number: 67634-1-Ig **1 Publications**



Basic Information

Catalog Number: 67634-1-Ig	GenBank Accession Number: BC000088	Purification Method: Protein G purification
Size: 150ul , Concentration: 1000 ug/ml by Bradford method using BSA as the standard;	GeneID (NCBI): 2947	CloneNo.: 1E2B8
Source: Mouse	UNIPROT ID: P21266	Recommended Dilutions: WB 1:2000-1:10000 IF/ICC 1:500-1:2000
Isotype: IgG1	Full Name: glutathione S-transferase mu 3 (brain)	
Immunogen Catalog Number: AG7494	Calculated MW: 27 kDa	
	Observed MW: 27 kDa	

Applications

Tested Applications: WB, IF/ICC, ELISA	Positive Controls: WB : HepG2 cells, HeLa cells, pig brain tissue IF/ICC : A431 cells,
Cited Applications: IF, CoIP	
Species Specificity: Human, pig	
Cited Species: human	

Background Information

GSTM3 is a cytosolic enzyme involved in prostaglandin and leukotriene synthesis and in the metabolism of toxic compounds, such as chemotherapeutic drugs, insecticides, herbicides, carcinogens, and by-products of oxidative stress. GSTM3 is expressed in testis, brain, lung, and lymphocytes. GSTM3 have been reported to be dysregulated in cancers like prostate cancer and colon cancer.

Notable Publications

Author	Pubmed ID	Journal	Application
Gelin Huang	35836265	Reprod Biol Endocrinol	IF,CoIP

Storage

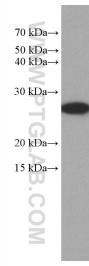
Storage:
Store at -20°C. Stable for one year after shipment.
Storage Buffer:
PBS with 0.02% sodium azide and 50% glycerol pH 7.3.
Aliquoting is unnecessary for -20°C storage

*** 20ul sizes contain 0.1% BSA

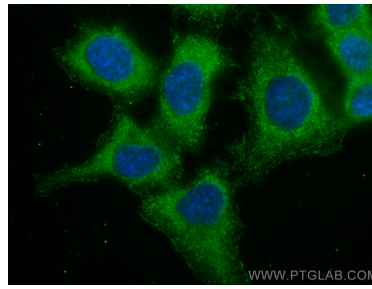
For technical support and original validation data for this product please contact:
T: 1 (888) 4PTGLAB (1-888-478-4522) (toll free in USA), or 1(312) 455-8498 (outside USA)
E: proteintech@ptglab.com
W: ptglab.com

This product is exclusively available under Proteintech Group brand and is not available to purchase from any other manufacturer.

Selected Validation Data



HepG2 cells were subjected to SDS PAGE followed by western blot with 67634-1-Ig (GSTM3 antibody) at dilution of 1:5000 incubated at room temperature for 1.5 hours.



Immunofluorescent analysis of (-20°C Methanol) fixed A431 cells using GSTM3 antibody (67634-1-Ig, Clone: 1E2B8) at dilution of 1:1000 and CoraLite®488-Conjugated AffiniPure Goat Anti-Mouse IgG(H+L).