

For Research Use Only

EXOSC9 Monoclonal antibody

Catalog Number: 67636-1-Ig

Featured Product



Basic Information

Catalog Number:

67636-1-Ig

Size:

150ul, Concentration: 1800 ug/ml by

Nanodrop and 1000 ug/ml by Bradford

method using BSA as the standard;

Source:

Mouse

Isotype:

IgG2a

Immunogen Catalog Number:

AG19783

GenBank Accession Number:

BC142978

GeneID (NCBI):

5393

UNIPROT ID:

Q06265

Full Name:

exosome component 9

Calculated MW:

456 aa, 51 kDa

Observed MW:

65-70 kDa

Purification Method:

Protein A purification

CloneNo.:

3F4G1

Recommended Dilutions:

WB 1:5000-1:50000

IHC 1:750-1:3000

IF/ICC 1:1000-1:4000

Applications

Tested Applications:

WB, IHC, IF/ICC, ELISA

Species Specificity:

Human, Mouse, Rat

Note-IHC: suggested antigen retrieval with TE buffer pH 9.0; (*) Alternatively, antigen retrieval may be performed with citrate buffer pH 6.0

Positive Controls:

WB : U2OS cells, HeLa cells, A549 cells, MCF-7 cells, HepG2 cells, K-562 cells, Jurkat cells, HSC-T6 cells, NIH/3T3 cells

IHC : human breast cancer tissue, mouse kidney tissue, rat kidney tissue

IF/ICC : HeLa cells,

Background Information

EXOSC9, also named as PMSCL1 and PM/Scl-75, is a key subunit of the exosome complex. EXOSC9 maintains self-renewal in a cell-autonomous manner. EXOSC9 has 4 isoforms with MW 49 kDa, 51 kDa, 39 kDa and 41 kDa. It's polymyositis/scleroderma auto-antigen 75 kDa. The MW of EXOSC9 is migrated to 60-75 kDa for modification in WB detection.

Storage

Storage:

Store at -20°C. Stable for one year after shipment.

Storage Buffer:

PBS with 0.02% sodium azide and 50% glycerol pH 7.3.

Aliquoting is unnecessary for -20°C storage

*** 20ul sizes contain 0.1% BSA

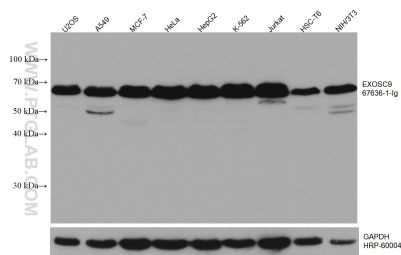
For technical support and original validation data for this product please contact:

T: 1 (888) 4PTGLAB (1-888-478-4522) (toll free in USA), or 1(312) 455-8498 (outside USA)

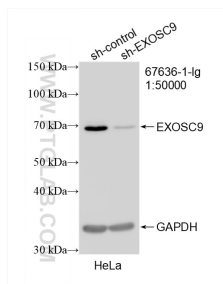
E: proteintech@ptglab.com
W: ptglab.com

This product is exclusively available under Proteintech Group brand and is not available to purchase from any other manufacturer.

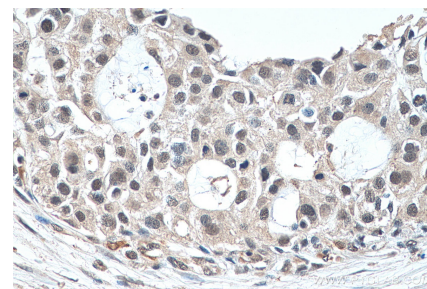
Selected Validation Data



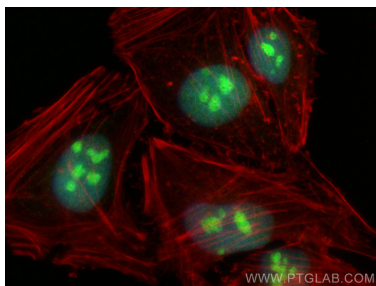
Various lysates were subjected to SDS PAGE followed by western blot with 67636-1-Ig (EXOSC9 antibody) at dilution of 1:20000 incubated at room temperature for 1.5 hours. The membrane was stripped and reblotted with HRP-conjugated GAPDH Monoclonal antibody (HRP-60004) as loading control.



WB result of EXOSC9 antibody (67636-1-Ig; 1:50000; incubated at room temperature for 1.5 hours) with sh-Control and sh-EXOSC9 transfected HeLa cells.



Immunohistochemical analysis of paraffin-embedded human breast cancer tissue slide using 67636-1-Ig (EXOSC9 antibody) at dilution of 1:1500 (under 40x lens). Heat mediated antigen retrieval with Tris-EDTA buffer (pH 9.0).



Immunofluorescent analysis of (4% PFA) fixed HeLa cells using EXOSC9 antibody (67636-1-Ig, Clone: 3F4G1) at dilution of 1:2000 and CoraLite®488-Conjugated AffiniPure Goat Anti-Mouse IgG(H+L), CL594-phalloidin (red).