

For Research Use Only

# EXOSC9 Monoclonal antibody, PBS Only



Catalog Number: 67636-1-PBS

Featured Product

## Basic Information

Catalog Number:

67636-1-PBS

Size:

100ug, Concentration: 1 mg/ml by Nanodrop;

Source:

Mouse

Isotype:

IgG2a

Immunogen Catalog Number:

AG19783

GenBank Accession Number:

BC142978

GeneID (NCBI):

5393

UNIPROT ID:

Q06265

Full Name:

exosome component 9

Calculated MW:

456 aa, 51 kDa

Observed MW:

65-70 kDa

Purification Method:

Protein A purification

CloneNo.:

3F4G1

## Applications

Tested Applications:

WB, IF, IHC, Indirect ELISA

Species Specificity:

Human, Mouse, Rat

## Background Information

EXOSC9, also named as PMSCL1 and PM/Scl-75, is a key subunit of the exosome complex. EXOSC9 maintains self-renewal in a cell-autonomous manner. EXOSC9 has 4 isoforms with MW 49 kDa, 51 kDa, 39 kDa and 41 kDa. It's polymyositis/scleroderma auto-antigen 75 kDa. The MW of EXOSC9 is migrated to 60-75 kDa for modification in WB detection.

## Storage

Storage:

Store at -80°C.

Storage Buffer:

PBS Only

For technical support and original validation data for this product please contact:

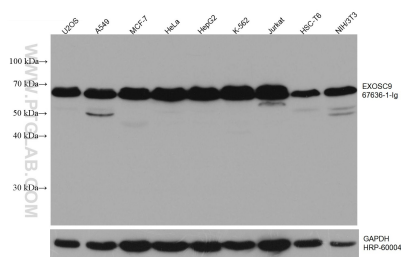
T: 1 (888) 4PTGLAB (1-888-478-4522) (toll free in USA), or 1(312) 455-8498 (outside USA)

E: [proteintech@ptglab.com](mailto:proteintech@ptglab.com)

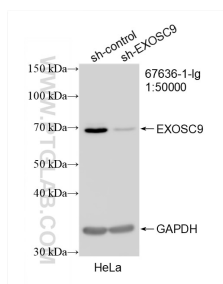
W: [ptglab.com](http://ptglab.com)

This product is exclusively available under Proteintech Group brand and is not available to purchase from any other manufacturer.

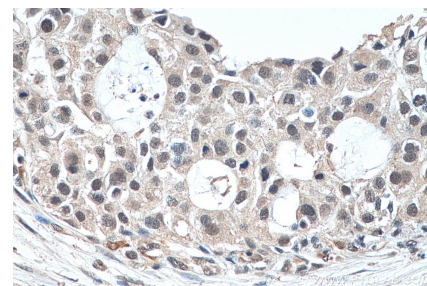
## Selected Validation Data



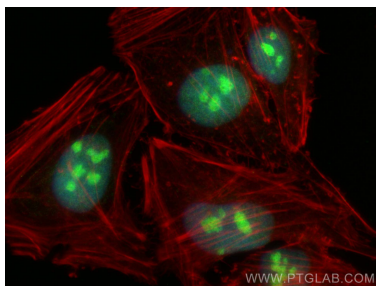
Various lysates were subjected to SDS PAGE followed by western blot with 67636-1-Ig (EXOSC9 antibody) at dilution of 1:20000 incubated at room temperature for 1.5 hours. The membrane was stripped and reblotted with HRP-conjugated GAPDH Monoclonal antibody (HRP-60004) as loading control. This data was developed using the same antibody clone with 67636-1-PBS in a different storage buffer formulation.



WB result of EXOSC9 antibody (67636-1-Ig; 1:50000; incubated at room temperature for 1.5 hours) with sh-Control and sh-EXOSC9 transfected HeLa cells. This data was developed using the same antibody clone with 67636-1-PBS in a different storage buffer formulation.



Immunohistochemical analysis of paraffin-embedded human breast cancer tissue slide using 67636-1-Ig (EXOSC9 antibody) at dilution of 1:1500 (under 40x lens). Heat mediated antigen retrieval with Tris-EDTA buffer (pH 9.0). This data was developed using the same antibody clone with 67636-1-PBS in a different storage buffer formulation.



Immunofluorescent analysis of (4% PFA) fixed HeLa cells using EXOSC9 antibody (67636-1-Ig, Clone: 3F4G1) at dilution of 1:2000 and CoraLite®488-Conjugated AffiniPure Goat Anti-Mouse IgG(H+L), CL594-phalloidin (red). This data was developed using the same antibody clone with 67636-1-PBS in a different storage buffer formulation.