

For Research Use Only

# ANO2 Monoclonal antibody

Catalog Number: 67638-1-Ig



## Basic Information

<b>Catalog Number:</b> 67638-1-Ig	<b>GenBank Accession Number:</b> NM_020373	<b>Purification Method:</b> Protein A purification
<b>Size:</b> 150ul , Concentration: 2000 ug/ml by Nanodrop and 1000 ug/ml by Bradford method using BSA as the standard;	<b>GeneID (NCBI):</b> 57101	<b>CloneNo.:</b> 2F12G1
<b>Source:</b> Mouse	<b>UNIPROT ID:</b> Q9NQ90	<b>Recommended Dilutions:</b> WB 1:1000-1:6000 IHC 1:50-1:500 IF-P 1:200-1:800
<b>Isotype:</b> IgG2a	<b>Full Name:</b> anoctamin 2	
	<b>Calculated MW:</b> 114 kDa	
	<b>Observed MW:</b> 114 kDa	

## Applications

<b>Tested Applications:</b> WB, IHC, IF-P, ELISA	<b>Positive Controls:</b>
<b>Species Specificity:</b> Human, mouse	<b>WB :</b> Y79 cells, NCCIT cells, U2OS cells, MDA-MB-231 cells, T-47D cells, HeLa cells
<b>Note-IHC:</b> suggested antigen retrieval with <b>TE buffer pH 9.0; (*) Alternatively, antigen retrieval may be performed with citrate buffer pH 6.0</b>	<b>IHC :</b> mouse eye tissue,
	<b>IF-P :</b> mouse eye tissue,

## Background Information

ANO2, also named as C12orf3 and TMEM16B, belongs to the anoctamin family. It acts as a calcium-activated chloride channel (CaCC), mostly in photoreceptors. It may mediate olfactory amplification in olfactory sensory neurons (OSNs) and light perception amplification in retina.

## Storage

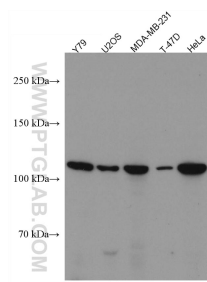
**Storage:**  
Store at -20°C.  
**Storage Buffer:**  
PBS with 0.02% sodium azide and 50% glycerol pH 7.3.  
**Aliquoting is unnecessary for -20°C storage**

\*\*\* 20ul sizes contain 0.1% BSA

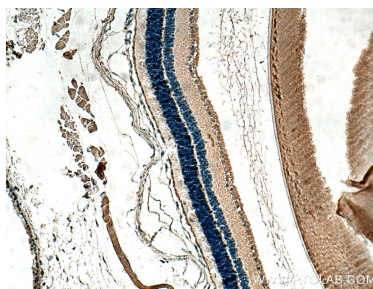
For technical support and original validation data for this product please contact:  
T: 1 (888) 4PTGLAB (1-888-478-4522) (toll free in USA), or 1(312) 455-8498 (outside USA)  
E: [proteintech@ptglab.com](mailto:proteintech@ptglab.com)  
W: [ptglab.com](http://ptglab.com)

This product is exclusively available under Proteintech Group brand and is not available to purchase from any other manufacturer.

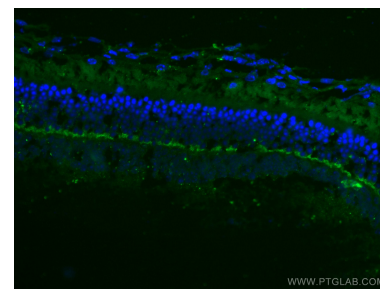
## Selected Validation Data



Various lysates were subjected to SDS PAGE followed by western blot with 67638-1-Ig (ANO2 antibody) at dilution of 1:3000 incubated at room temperature for 1.5 hours.



Immunohistochemical analysis of paraffin-embedded mouse eye tissue slide using 67638-1-Ig (ANO2 antibody) at dilution of 1:200 (under 10x lens). Heat mediated antigen retrieval with Tris-EDTA buffer (pH 9.0).



Immunofluorescent analysis of (4% PFA) fixed mouse eye tissue using ANO2 antibody (67638-1-Ig, Clone: 2F12G1) at dilution of 1:400 and CoraLite®488-Conjugated AffiniPure Goat Anti-Mouse IgG(H+L).