

For Research Use Only

PHLPP Monoclonal antibody

Catalog Number: 67640-1-Ig **3 Publications**



Basic Information

Catalog Number: 67640-1-Ig	GenBank Accession Number: BC126277	Purification Method: Protein A purification
Size: 150ul , Concentration: 1900 ug/ml by Nanodrop and 1000 ug/ml by Bradford method using BSA as the standard;	GeneID (NCBI): 23239	CloneNo.: 2E8E6
Source: Mouse	UNIPROT ID: O60346	Recommended Dilutions: WB 1:1000-1:6000
Isotype: IgG2b	Full Name: PH domain and leucine rich repeat protein phosphatase	
Immunogen Catalog Number: AG18982	Calculated MW: 1717 aa, 184 kDa	
	Observed MW: 185 kDa	

Applications

Tested Applications: WB, ELISA	Positive Controls: WB : mouse brain tissue, rat brain tissue, pig brain tissue, HEK-293 cells
Cited Applications: WB	
Species Specificity: Human, mouse , rat, pig	
Cited Species: human, mouse, pig	

Background Information

PHLPP (PH domain leucine-rich-repeats protein phosphatase) belongs to a novel family of Ser/Thr protein phosphatases that consists of PHLPP1 and PHLPP2 isoforms. It has been shown that PHLPP negatively regulates multiple oncogenic pathways by directly dephosphorylating and inactivating key signaling molecules, including Akt, S6K, and RAF1. Observed MW of PHLPP is 185 kDa.

Notable Publications

Author	Pubmed ID	Journal	Application
Xiaoman Zhu	36096985	Cell Death Dis	WB
Agus Suryawan	36402914	Pediatr Res	WB
Zong-Ze Zhang	35602094	Oxid Med Cell Longev	WB

Storage

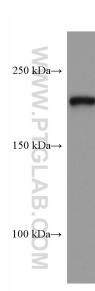
Storage:
Store at -20°C.
Storage Buffer:
PBS with 0.02% sodium azide and 50% glycerol pH 7.3.
Aliquoting is unnecessary for -20°C storage

*** 20ul sizes contain 0.1% BSA

For technical support and original validation data for this product please contact:
T: 1 (888) 4PTGLAB (1-888-478-4522) (toll free in USA), or 1(312) 455-8498 (outside USA)
E: proteintech@ptglab.com
W: ptglab.com

This product is exclusively available under Proteintech Group brand and is not available to purchase from any other manufacturer.

Selected Validation Data



mouse brain tissue were subjected to SDS PAGE followed by western blot with 67640-1-Ig (PHLPP antibody) at dilution of 1:3000 incubated at room temperature for 1.5 hours.