

For Research Use Only

# PHLPP Monoclonal antibody, PBS Only



Catalog Number: 67640-1-PBS

## Basic Information

<b>Catalog Number:</b> 67640-1-PBS	<b>GenBank Accession Number:</b> BC126277	<b>Purification Method:</b> Protein A purification
<b>Size:</b> 100ug , Concentration: 1 mg/ml by Nanodrop;	<b>GeneID (NCBI):</b> 23239	<b>CloneNo.:</b> 2E8E6
<b>Source:</b> Mouse	<b>UNIPROT ID:</b> O60346	
<b>Isotype:</b> IgG2b	<b>Full Name:</b> PH domain and leucine rich repeat protein phosphatase	
<b>Immunogen Catalog Number:</b> AG18982	<b>Calculated MW:</b> 1717 aa, 184 kDa	
	<b>Observed MW:</b> 185 kDa	

## Applications

**Tested Applications:**  
WB, Indirect ELISA

**Species Specificity:**  
Human, mouse , rat, pig

## Background Information

PHLPP (PH domain leucine-rich-repeats protein phosphatase) belongs to a novel family of Ser/Thr protein phosphatases that consists of PHLPP1 and PHLPP2 isoforms. It has been shown that PHLPP negatively regulates multiple oncogenic pathways by directly dephosphorylating and inactivating key signaling molecules, including Akt, S6K, and RAF1. Observed MW of PHLPP is 185 kDa.

## Storage

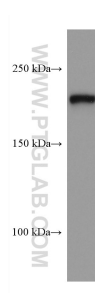
**Storage:**  
Store at -80°C.

**Storage Buffer:**  
PBS Only

For technical support and original validation data for this product please contact:  
T: 1 (888) 4PTGLAB (1-888-478-4522) (toll free in USA), or 1(312) 455-8498 (outside USA)  
E: [proteintech@ptglab.com](mailto:proteintech@ptglab.com)  
W: [ptglab.com](http://ptglab.com)

This product is exclusively available under Proteintech Group brand and is not available to purchase from any other manufacturer.

## Selected Validation Data



mouse brain tissue were subjected to SDS PAGE followed by western blot with 67640-1-Ig (PHLPP antibody) at dilution of 1:3000 incubated at room temperature for 1.5 hours. This data was developed using the same antibody clone with 67640-1-PBS in a different storage buffer formulation.