

For Research Use Only

BAT1 Monoclonal antibody

Catalog Number: 67641-1-Ig



Basic Information

Catalog Number: 67641-1-Ig	GenBank Accession Number: BC000361	Purification Method: Protein G purification
Size: 150ul , Concentration: 1000 ug/ml by Bradford method using BSA as the standard;	GeneID (NCBI): 7919	CloneNo.: 2G9H8
Source: Mouse	UNIPROT ID: Q13838	Recommended Dilutions: WB 1:5000-1:50000 IP 0.5-4.0 ug for 1.0-3.0 mg of total protein lysate IHC 1:500-1:2000
Isotype: IgG1	Full Name: HLA-B associated transcript 1	
Immunogen Catalog Number: AG6612	Calculated MW: 53 kDa	
	Observed MW: 50 kDa	

Applications

Tested Applications: WB, IHC, IP, ELISA	Positive Controls:
Species Specificity: human, mouse, rat	WB : HeLa cells, HEK-293 cells, HepG2 cells, Jurkat cells, K-562 cells, NIH/3T3 cells, 4T1 cells
Note-IHC: suggested antigen retrieval with TE buffer pH 9.0; (*) Alternatively, antigen retrieval may be performed with citrate buffer pH 6.0	IP : HeLa cells, IHC : human breast cancer tissue,

Background Information

DDX39B, is a 428 amino acid protein, which contains one helicase C-terminal domain, one helicase ATP-binding domain and belongs to the DEAD box helicase family. DECD subfamily. DDX39B localizes in the nucleus and cytoplasm. BAT1 is involved in nuclear export of spliced and unspliced mRNA. BAT1 as ATP dependent RNA helicase, may be a translation initiation factor and acts as a negative regulator of inflammatory cytokines. This antibody may cross-react with DDX39A.

Storage

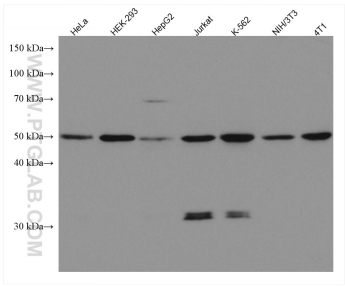
Storage:
Store at -20°C. Stable for one year after shipment.
Storage Buffer:
PBS with 0.02% sodium azide and 50% glycerol pH 7.3.
Aliquoting is unnecessary for -20°C storage

*** 20ul sizes contain 0.1% BSA

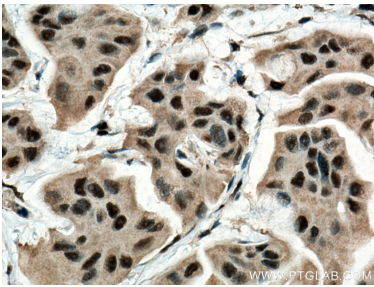
For technical support and original validation data for this product please contact:
T: 1 (888) 4PTGLAB (1-888-478-4522) (toll free in USA), or 1(312) 455-8498 (outside USA)
E: proteintech@ptglab.com
W: ptglab.com

This product is exclusively available under Proteintech Group brand and is not available to purchase from any other manufacturer.

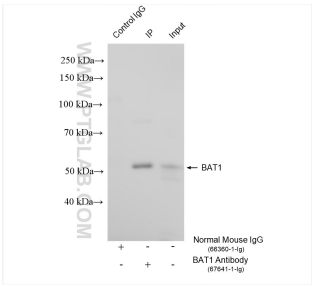
Selected Validation Data



Various lysates were subjected to SDS PAGE followed by western blot with 67641-1-Ig (BAT1 antibody) at dilution of 1:10000 incubated at room temperature for 1.5 hours.



Immunohistochemical analysis of paraffin-embedded human breast cancer tissue slide using 67641-1-Ig (BAT1 antibody) at dilution of 1:1000 (under 40x lens). Heat mediated antigen retrieval with Tris-EDTA buffer (pH 9.0).



IP result of anti-BAT1 (IP:67641-1-Ig, 4ug; Detection:67641-1-Ig 1:2000) with HeLa cells lysate 1280 ug.