

For Research Use Only

# GRIA1 Monoclonal antibody, PBS Only



Catalog Number: 67642-1-PBS

## Basic Information

**Catalog Number:**

67642-1-PBS

**Size:**

100ug , Concentration: 1 mg/ml by Nanodrop;

**Source:**

Mouse

**Isotype:**

IgG2b

**Immunogen Catalog Number:**

AG28932

**GenBank Accession Number:**

BC111734

**GeneID (NCBI):**

2890

**UNIPROT ID:**

P42261

**Full Name:**

glutamate receptor, ionotropic, AMPA 1

**Calculated MW:**

906 aa, 102 kDa

**Observed MW:**

100 kDa

**Purification Method:**

Protein A purification

**CloneNo.:**

1F4A1

## Applications

**Tested Applications:**

WB, IF, IHC, Indirect ELISA

**Species Specificity:**

Human, Pig, Mouse, Rat, Rabbit

## Storage

**Storage:**

Store at -80°C.

**Storage Buffer:**

PBS Only

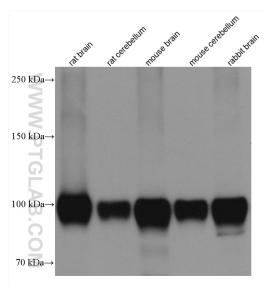
For technical support and original validation data for this product please contact:

T: 1 (888) 4PTGLAB (1-888-478-4522) (toll free in USA), or 1(312) 455-8498 (outside USA)

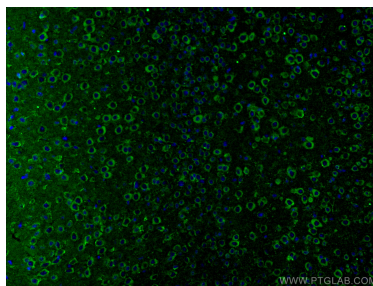
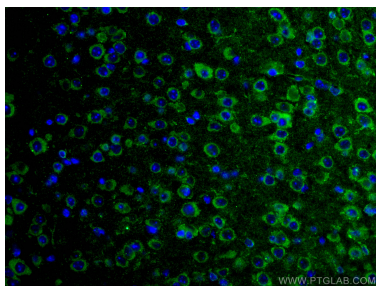
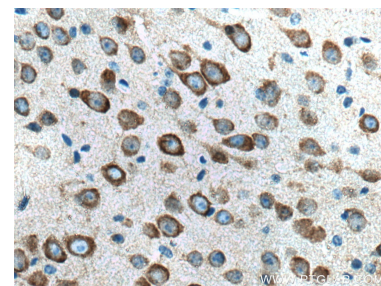
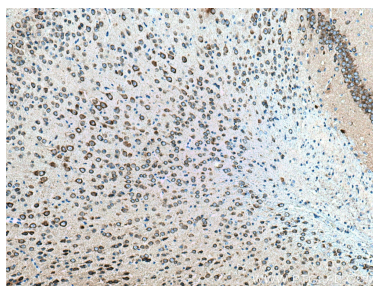
E: [proteintech@ptglab.com](mailto:proteintech@ptglab.com)  
W: [ptglab.com](http://ptglab.com)

This product is exclusively available under Proteintech Group brand and is not available to purchase from any other manufacturer.

## Selected Validation Data



Various lysates were subjected to SDS PAGE followed by western blot with 67642-1-Ig (GRIA1 antibody) at dilution of 1:50000 incubated at room temperature for 1.5 hours. This data was developed using the same antibody clone with 67642-1-PBS in a different storage buffer formulation.



Immunofluorescent analysis of (4% PFA) fixed mouse brain tissue using GRIA1 antibody (67642-1-Ig, Clone: 1F4A1) at dilution of 1:400 and CoraLite®488-Conjugated AffiniPure Goat Anti-Mouse IgG(H+L). This data was developed using the same antibody clone with 67642-1-PBS in a different storage buffer formulation.

Immunofluorescent analysis of (4% PFA) fixed mouse brain tissue using GRIA1 antibody (67642-1-Ig, Clone: 1F4A1) at dilution of 1:400 and CoraLite®488-Conjugated AffiniPure Goat Anti-Mouse IgG(H+L). This data was developed using the same antibody clone with 67642-1-PBS in a different storage buffer formulation.