

For Research Use Only

HDAC10 Monoclonal antibody

Catalog Number: 67646-1-Ig



Basic Information

Catalog Number: 67646-1-Ig	GenBank Accession Number: BC125083	Purification Method: Protein A purification
Size: 150ul , Concentration: 1900 µg/ml by Nanodrop and 1000 µg/ml by Bradford method using BSA as the standard;	GeneID (NCBI): 83933	CloneNo.: 1A1B11
Source: Mouse	Full Name: histone deacetylase 10	Recommended Dilutions: WB 1:5000-1:50000
Isotype: IgG1	Calculated MW: 669 aa, 71 kDa	
Immunogen Catalog Number: AG18470	Observed MW: 70-75 kDa	

Applications

Tested Applications: WB, ELISA	Positive Controls:
Species Specificity: Human, mouse, rat	WB : LNCaP cells, HeLa cells, MCF-7 cells, HEK-293 cells, Jurkat cells, HSC-T6 cells, PC-12 cells, NIH/3T3 cells

Background Information

HDAC10, also named as Histone deacetylase 10, is a 669 amino acid protein, which is widely expressed with high levels in liver and kidney. HDAC10, which belongs to the class IIb subfamily, has an active deacetylase domain (DAC) and a catalytically inactive leucine-rich domain (LRD). HDAC10 is determined that it plays a role in homologous recombination, promotes autophagy and survival in neuroblastoma cells, suppresses cervical cancer metastasis and facilitates the cell cycle.

Storage

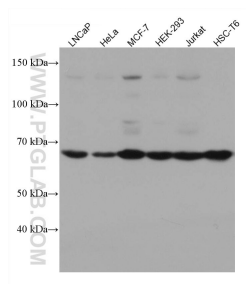
Storage:
Store at -20°C. Stable for one year after shipment.
Storage Buffer:
PBS with 0.02% sodium azide and 50% glycerol pH 7.3.
Aliquoting is unnecessary for -20°C storage

*** 20ul sizes contain 0.1% BSA

For technical support and original validation data for this product please contact:
T: 1 (888) 4PTGLAB (1-888-478-4522) (toll free in USA), or 1(312) 455-8498 (outside USA)
E: proteintech@ptglab.com
W: ptglab.com

This product is exclusively available under Proteintech Group brand and is not available to purchase from any other manufacturer.

Selected Validation Data



Various lysates were subjected to SDS PAGE followed by western blot with 67646-1-Ig (HDAC10 antibody) at dilution of 1:10000 incubated at room temperature for 1.5 hours.