

For Research Use Only

PPM1B Monoclonal antibody

Catalog Number: 67647-1-Ig **1 Publications**



Basic Information

Catalog Number: 67647-1-Ig	GenBank Accession Number: BC012002	Purification Method: Protein G purification
Size: 150ul , Concentration: 1000 ug/ml by Nanodrop and 503 ug/ml by Bradford method using BSA as the standard;	GeneID (NCBI): 5495	CloneNo.: 2C7H2
Source: Mouse	UNIPROT ID: O75688	Recommended Dilutions: WB 1:5000-1:50000 IHC 1:500-1:2000 IF/ICC 1:500-1:2000
Isotype: IgG1	Full Name: protein phosphatase 1B (formerly 2C), magnesium-dependent, beta isoform	
Immunogen Catalog Number: AG3871	Calculated MW: 479 aa, 53 kDa	
	Observed MW: 36, 53 kDa	

Applications

Tested Applications: WB, IHC, IF/ICC, ELISA	Positive Controls:
Species Specificity: human, mouse, rat	WB : HeLa cells, HEK-293 cells, HepG2 cells, Jurkat cells, K-562 cells, HSC-T6 cells, NIH/3T3 cells
Note-IHC: suggested antigen retrieval with TE buffer pH 9.0; (*) Alternatively, antigen retrieval may be performed with citrate buffer pH 6.0	IHC : human breast cancer tissue, mouse skeletal muscle tissue
	IF/ICC : A431 cells,

Background Information

PPM1B can identify 4 isoforms with the WM of 36-55 kDa.

Notable Publications

Author	Pubmed ID	Journal	Application
Lakmini S Premadasa	39605466	bioRxiv	

Storage

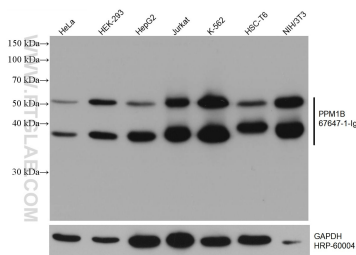
Storage:
Store at -20°C. Stable for one year after shipment.
Storage Buffer:
PBS with 0.02% sodium azide and 50% glycerol, pH7.3
Aliquoting is unnecessary for -20°C storage

*** 20ul sizes contain 0.1% BSA

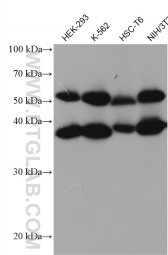
For technical support and original validation data for this product please contact:
T: 1 (888) 4PTGLAB (1-888-478-4522) (toll free in USA), or 1(312) 455-8498 (outside USA)
E: proteintech@ptglab.com
W: ptglab.com

This product is exclusively available under Proteintech Group brand and is not available to purchase from any other manufacturer.

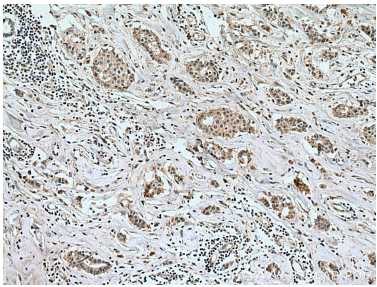
Selected Validation Data



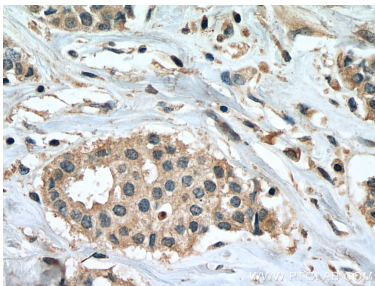
Various lysates were subjected to SDS PAGE followed by western blot with 67647-1-Ig (PPM1B antibody) at dilution of 1:10000 incubated at room temperature for 1.5 hours. The membrane was stripped and reblotted with HRP-conjugated GAPDH Monoclonal antibody (HRP-60004) as loading control.



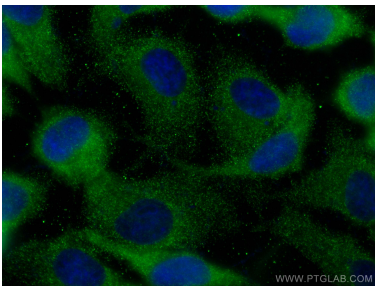
Various lysates were subjected to SDS PAGE followed by western blot with 67647-1-Ig (PPM1B antibody) at dilution of 1:10000 incubated at room temperature for 1.5 hours.



Immunohistochemical analysis of paraffin-embedded human breast cancer tissue slide using 67647-1-Ig (PPM1B antibody) at dilution of 1:1000 (under 10x lens). Heat mediated antigen retrieval with Tris-EDTA buffer (pH 9.0).



Immunohistochemical analysis of paraffin-embedded human breast cancer tissue slide using 67647-1-Ig (PPM1B antibody) at dilution of 1:1000 (under 40x lens). Heat mediated antigen retrieval with Tris-EDTA buffer (pH 9.0).



Immunofluorescent analysis of (-20°C Methanol) fixed A431 cells using PPM1B antibody (67647-1-Ig, Clone: 2C7H2) at dilution of 1:1000 and CoraLite® 488-Conjugated AffiniPure Goat Anti-Mouse IgG(H+L) (SA00013-1).