

For Research Use Only

PPM1B Monoclonal antibody, PBS Only



Catalog Number: 67647-1-PBS

Basic Information

Catalog Number: 67647-1-PBS	GenBank Accession Number: BC012002	Purification Method: Protein G purification
Size: 100ug , Concentration: 1 mg/ml by Nanodrop;	GeneID (NCBI): 5495	CloneNo.: 2C7H2
Source: Mouse	UNIPROT ID: O75688	
Isotype: IgG1	Full Name: protein phosphatase 1B (formerly 2C), magnesium-dependent, beta isoform	
Immunogen Catalog Number: AG3871	Calculated MW: 479 aa, 53 kDa	
	Observed MW: 36, 53 kDa	

Applications

Tested Applications:
WB, IHC, Indirect ELISA

Species Specificity:
Human, mouse, rat

Background Information

PPM1B can identify 4 isoforms with the WM of 36-55 kDa.

Storage

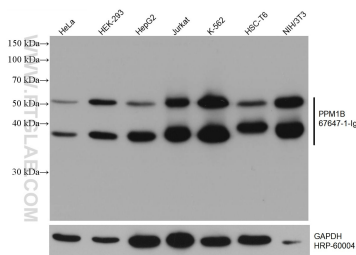
Storage:
Store at -80°C.

Storage Buffer:
PBS Only

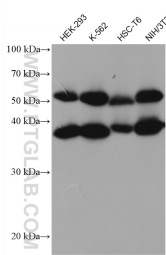
For technical support and original validation data for this product please contact:
T: 1 (888) 4PTGLAB (1-888-478-4522) (toll free in USA), or 1(312) 455-8498 (outside USA)
E: proteintech@ptglab.com
W: ptglab.com

This product is exclusively available under Proteintech Group brand and is not available to purchase from any other manufacturer.

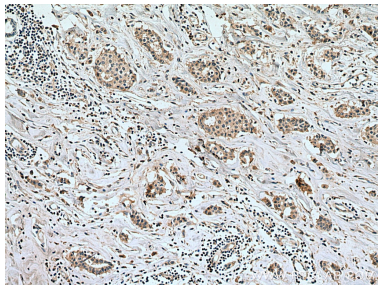
Selected Validation Data



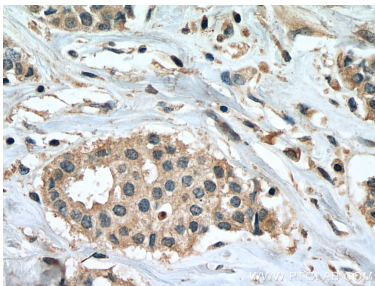
Various lysates were subjected to SDS PAGE followed by western blot with 67647-1-Ig (PPM1B antibody) at dilution of 1:10000 incubated at room temperature for 1.5 hours. The membrane was stripped and reblotted with HRP-conjugated GAPDH Monoclonal antibody (HRP-60004) as loading control. This data was developed using the same antibody clone with 67647-1-PBS in a different storage buffer formulation.



Various lysates were subjected to SDS PAGE followed by western blot with 67647-1-Ig (PPM1B antibody) at dilution of 1:10000 incubated at room temperature for 1.5 hours. This data was developed using the same antibody clone with 67647-1-PBS in a different storage buffer formulation.



Immunohistochemical analysis of paraffin-embedded human breast cancer tissue slide using 67647-1-Ig (PPM1B antibody) at dilution of 1:1000 (under 10x lens). Heat mediated antigen retrieval with Tris-EDTA buffer (pH 9.0). This data was developed using the same antibody clone with 67647-1-PBS in a different storage buffer formulation.



Immunohistochemical analysis of paraffin-embedded human breast cancer tissue slide using 67647-1-Ig (PPM1B antibody) at dilution of 1:1000 (under 40x lens). Heat mediated antigen retrieval with Tris-EDTA buffer (pH 9.0). This data was developed using the same antibody clone with 67647-1-PBS in a different storage buffer formulation.