

For Research Use Only

TCF7L1/TCF7L2 Monoclonal antibody

Catalog Number: 67652-1-Ig



Basic Information

Catalog Number:

67652-1-Ig

Size:

150ul, Concentration: 2100 ug/ml by Nanodrop and 1000 ug/ml by Bradford method using BSA as the standard;

Source:

Mouse

Isotype:

IgG2b

Immunogen Catalog Number:

AG28954

GenBank Accession Number:

BC058894

GeneID (NCBI):

83439

UNIPROT ID:

Q9HCS4

Full Name:

transcription factor 7-like 1 (T-cell specific, HMG-box)

Calculated MW:

63 kDa

Observed MW:

70 kDa

Purification Method:

Protein A purification

CloneNo.:

2B2D12

Recommended Dilutions:

WB 1:20000-1:100000

Applications

Tested Applications:

WB, ELISA

Species Specificity:

Human, Mouse

Positive Controls:

WB : HEK-293 cells, HeLa cells, A431 cells, NCCIT cells, JAR cells, NIH/3T3 cells

Background Information

TCF7L1 is one of TCF/LEF transcription factors that are mediators of the Wnt signaling pathway and are antagonized by the TGF-beta signaling pathway. It binds to DNA and acts as a repressor in the absence of CTNNB1, and as an activator in its presence. It's necessary for the terminal differentiation of epidermal cells, the formation of keratohyalin granules and the development of the barrier function of the epidermis. This antibody raised against 1-200aa of human TCF7L1 can also react with TCF7L2.

Storage

Storage:

Store at -20°C.

Storage Buffer:

PBS with 0.02% sodium azide and 50% glycerol pH 7.3.

Aliquoting is unnecessary for -20°C storage

*** 20ul sizes contain 0.1% BSA

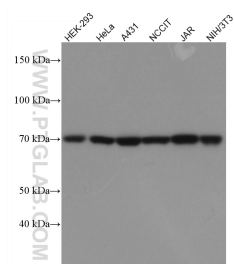
For technical support and original validation data for this product please contact:

T: 1 (888) 4PTGLAB (1-888-478-4522) (toll free in USA), or 1(312) 455-8498 (outside USA)

E: proteintech@ptglab.com
W: ptglab.com

This product is exclusively available under Proteintech Group brand and is not available to purchase from any other manufacturer.

Selected Validation Data



Various lysates were subjected to SDS PAGE followed by western blot with 67652-1-Ig (TCF7L1/TCF7L2 antibody) at dilution of 1:50000 incubated at room temperature for 1.5 hours.