

For Research Use Only

# TCF7L1/TCF7L2 Monoclonal antibody



Catalog Number: 67652-1-Ig

## Basic Information

<b>Catalog Number:</b> 67652-1-Ig	<b>GenBank Accession Number:</b> BC058894	<b>Purification Method:</b> Protein A purification
<b>Size:</b> 150ul , Concentration: 2100 µg/ml by Nanodrop and 1000 µg/ml by Bradford method using BSA as the standard;	<b>GeneID (NCBI):</b> 83439	<b>CloneNo.:</b> 2B2D12
<b>Source:</b> Mouse	<b>Full Name:</b> transcription factor 7-like 1 (T-cell specific, HMG-box)	<b>Recommended Dilutions:</b> WB 1:20000-1:100000
<b>Isotype:</b> IgG2b	<b>Calculated MW:</b> 63 kDa	
<b>Immunogen Catalog Number:</b> AG28954	<b>Observed MW:</b> 70 kDa	

## Applications

<b>Tested Applications:</b> WB, ELISA	<b>Positive Controls:</b> WB : HEK-293 cells, HeLa cells, A431 cells, NCCIT cells, JAR cells, NIH/3T3 cells
<b>Species Specificity:</b> Human, Mouse	

## Background Information

TCF7L1 is one of TCF/LEF transcription factors that are mediators of the Wnt signaling pathway and are antagonized by the TGF-beta signaling pathway. It binds to DNA and acts as a repressor in the absence of CTNNB1, and as an activator in its presence. It's necessary for the terminal differentiation of epidermal cells, the formation of keratohyalin granules and the development of the barrier function of the epidermis. This antibody raised against 1-200aa of human TCF7L1 can also react with TCF7L2.

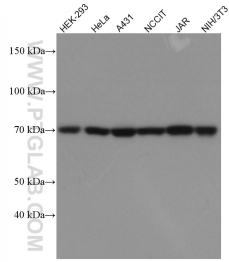
## Storage

**Storage:**  
Store at -20°C.  
**Storage Buffer:**  
PBS with 0.02% sodium azide and 50% glycerol pH 7.3.  
Aliquoting is unnecessary for -20°C storage

For technical support and original validation data for this product please contact:  
T: 1 (888) 4PTGLAB (1-888-478-4522) (toll free in USA), or 1(312) 455-8498 (outside USA)  
E: proteintech@ptglab.com  
W: ptglab.com

This product is exclusively available under Proteintech Group brand and is not available to purchase from any other manufacturer.

## Selected Validation Data



Various lysates were subjected to SDS PAGE followed by western blot with 67652-1-Ig (TCF7L1/TCF7L2 antibody) at dilution of 1:50000 incubated at room temperature for 1.5 hours.