

For Research Use Only

CYR61/CCN1 Monoclonal antibody

Catalog Number: 67656-1-Ig **4 Publications**



Basic Information

| | | |
|---|---|--|
| Catalog Number: 67656-1-Ig | GenBank Accession Number: BC001271 | Purification Method: Protein A purification |
| Size: 150ul , Concentration: 1000 ug/ml by Nanodrop; | GeneID (NCBI): 3491 | CloneNo.: 2E11F11 |
| Source: Mouse | UNIPROT ID: O00622 | Recommended Dilutions: WB 1:5000-1:20000 IHC 1:500-1:2000 IF/ICC 1:500-1:2000 |
| Isotype: IgG1 | Full Name: cysteine-rich, angiogenic inducer, 61 | |
| Immunogen Catalog Number: AG25129 | Calculated MW: 42 kDa | |
| | Observed MW: 40-42 kDa | |

Applications

| | |
|--|---|
| Tested Applications: WB, IHC, IF/ICC, ELISA | Positive Controls: WB : U2OS cells, A431 cells, PC-3 cells, HeLa cells, MDA-MB-231 cells IHC : human liver cancer tissue, human stomach cancer tissue IF/ICC : MCF-7 cells, A431 cells |
| Cited Applications: WB, IHC | |
| Species Specificity: human | |
| Cited Species: human, mouse | |
| Note-IHC: suggested antigen retrieval with TE buffer pH 9.0; (*) Alternatively, antigen retrieval may be performed with citrate buffer pH 6.0 | |

Notable Publications

| Author | Pubmed ID | Journal | Application |
|------------|-----------|-------------------|-------------|
| Yanzi Zang | 34515990 | Hum Cell | WB |
| Yuan Hu | 34826200 | Environ Toxicol | WB |
| Nana Geng | 39007035 | J Orthop Translat | WB,IHC |

Storage

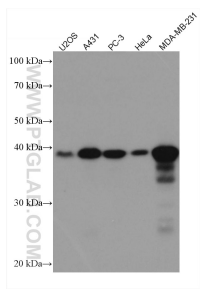
Storage:
Store at -20°C. Stable for one year after shipment.
Storage Buffer:
PBS with 0.02% sodium azide and 50% glycerol pH 7.3.
Aliquoting is unnecessary for -20°C storage

*** 20ul sizes contain 0.1% BSA

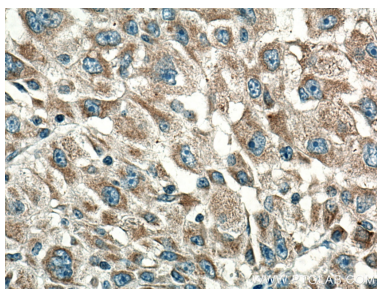
For technical support and original validation data for this product please contact:
T: 1 (888) 4PTGLAB (1-888-478-4522) (toll free in USA), or 1(312) 455-8498 (outside USA)
E: proteintech@ptglab.com
W: ptglab.com

This product is exclusively available under Proteintech Group brand and is not available to purchase from any other manufacturer.

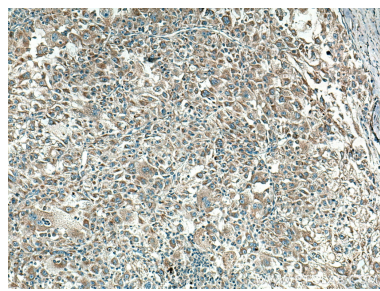
Selected Validation Data



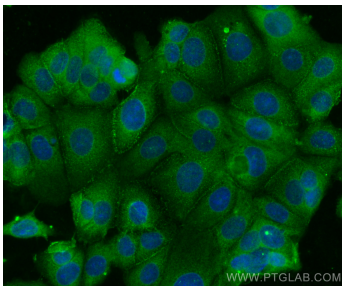
Various lysates were subjected to SDS PAGE followed by western blot with 67656-1-Ig (CYR61 antibody) at dilution of 1:10000 incubated at room temperature for 1.5 hours.



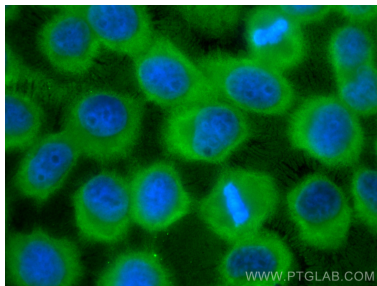
Immunohistochemical analysis of paraffin-embedded human liver cancer tissue slide using 67656-1-Ig (CYR61 antibody) at dilution of 1:1000 (under 40x lens). Heat mediated antigen retrieval with Tris-EDTA buffer (pH 9.0).



Immunohistochemical analysis of paraffin-embedded human liver cancer tissue slide using 67656-1-Ig (CYR61 antibody) at dilution of 1:1000 (under 10x lens). Heat mediated antigen retrieval with Tris-EDTA buffer (pH 9.0).



Immunofluorescent analysis of (4% PFA) fixed MCF-7 cells using CYR61 antibody (67656-1-Ig, Clone: 2E11F11) at dilution of 1:1000 and CoraLite®488-Conjugated AffiniPure Goat Anti-Mouse IgG(H+L).



Immunofluorescent analysis of (-20°C Ethanol) fixed A431 cells using CYR61 antibody (67656-1-Ig, Clone: 2E11F11) at dilution of 1:400 and CoraLite®488-Conjugated AffiniPure Goat Anti-Mouse IgG(H+L).