

For Research Use Only

EPCR/CD201 Monoclonal antibody

Catalog Number: 67658-1-Ig **1 Publications**



Basic Information

Catalog Number: 67658-1-Ig	GenBank Accession Number: BC014451	Purification Method: Protein A purification
Size: 150ul , Concentration: 1300 ug/ml by Nanodrop;	GeneID (NCBI): 10544	CloneNo.: 1F5C4
Source: Mouse	UNIPROT ID: Q9UNN8	Recommended Dilutions: WB 1:1000-1:6000 IHC 1:3000-1:12000
Isotype: IgG1	Full Name: protein C receptor, endothelial (EPCR)	
Immunogen Catalog Number: AG25628	Calculated MW: 238 aa, 27 kDa	
	Observed MW: 49 kDa	

Applications

Tested Applications: WB, IHC, FC (Intra), ELISA	Positive Controls:
Cited Applications: WB, IHC, IF	WB : human placenta tissue, pig spleen tissue, pig heart tissue, pig vein tissue
Species Specificity: human, pig	IHC : human tonsillitis tissue,
Cited Species: human, mouse	
Note-IHC: suggested antigen retrieval with TE buffer pH 9.0; (*) Alternatively, antigen retrieval may be performed with citrate buffer pH 6.0	

Notable Publications

Author	Pubmed ID	Journal	Application
Panpan Zhang	35169126	Signal Transduct Target Ther	WB,IHC,IF

Storage

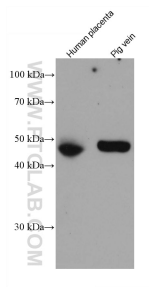
Storage:
Store at -20°C. Stable for one year after shipment.
Storage Buffer:
PBS with 0.02% sodium azide and 50% glycerol pH 7.3.
Aliquoting is unnecessary for -20°C storage

*** 20ul sizes contain 0.1% BSA

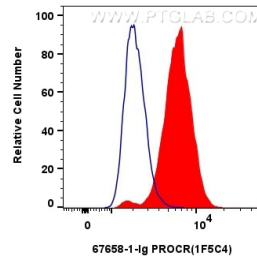
For technical support and original validation data for this product please contact:
T: 1 (888) 4PTGLAB (1-888-478-4522) (toll free in USA), or 1(312) 455-8498 (outside USA)
E: proteintech@ptglab.com
W: ptglab.com

This product is exclusively available under Proteintech Group brand and is not available to purchase from any other manufacturer.

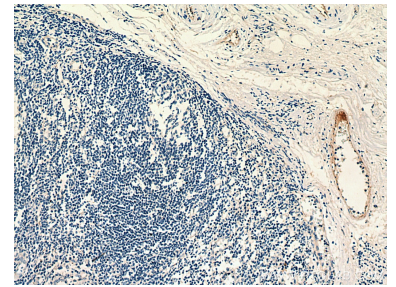
Selected Validation Data



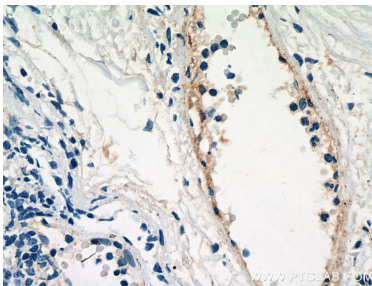
Various lysates were subjected to SDS PAGE followed by western blot with 67658-1-Ig (PROCR antibody) at dilution of 1:3000 incubated at room temperature for 1.5 hours.



1×10^6 A549 cells were intracellularly stained with 0.4 μ g PROCR Monoclonal antibody (67658-1-Ig, Clone:1F5C4) and CoraLite®488-Conjugated AffiniPure Goat Anti-Mouse IgG(H+L) (SA00013-1) (red), or 0.4 μ g Mouse IgG1 Isotype Control (MOPC-21) (65124-1-Ig, Clone: MOPC-21) (blue). Cells were fixed with 4% PFA and permeabilized with Flow Cytometry Perm Buffer (PF00011-C).



Immunohistochemical analysis of paraffin-embedded human tonsillitis tissue slide using 67658-1-Ig (PROCR antibody) at dilution of 1:6000 (under 10x lens). Heat mediated antigen retrieval with Tris-EDTA buffer (pH 9.0).



Immunohistochemical analysis of paraffin-embedded human tonsillitis tissue slide using 67658-1-Ig (PROCR antibody) at dilution of 1:6000 (under 40x lens). Heat mediated antigen retrieval with Tris-EDTA buffer (pH 9.0).