

For Research Use Only

# ETFA Monoclonal antibody

Catalog Number: 67661-1-Ig



## Basic Information

<b>Catalog Number:</b> 67661-1-Ig	<b>GenBank Accession Number:</b> BC015526	<b>Purification Method:</b> Protein A purification
<b>Size:</b> 150ul , Concentration: 1000 ug/ml by Nanodrop and 500 ug/ml by Bradford method using BSA as the standard;	<b>GeneID (NCBI):</b> 2108	<b>CloneNo.:</b> 3C12G5
<b>Source:</b> Mouse	<b>UNIPROT ID:</b> P13804	<b>Recommended Dilutions:</b> WB 1:5000-1:50000 IHC 1:8000-1:32000 IF/ICC 1:200-1:800
<b>Isotype:</b> IgG2a	<b>Full Name:</b> electron-transfer-flavoprotein, alpha polypeptide	
<b>Immunogen Catalog Number:</b> AG30257	<b>Calculated MW:</b> 30 kDa	
	<b>Observed MW:</b> 30 kDa	

## Applications

**Tested Applications:**  
WB, IHC, IF/ICC, ELISA

**Species Specificity:**  
Human, mouse, rat, pig

**Note-IHC: suggested antigen retrieval with TE buffer pH 9.0; (\*) Alternatively, antigen retrieval may be performed with citrate buffer pH 6.0**

**Positive Controls:**

**WB :** HCT 116 cells, LNCaP cells, mouse brain tissue, HuH-7 cells, HeLa cells, K-562 cells, pig liver tissue, rat liver tissue

**IHC :** human liver cancer tissue,

**IF/ICC :** HepG2 cells,

## Background Information

The electron transfer flavoprotein(ETF), located in the mitochondrial matrix, is a nuclear-encoded enzyme delivering to the respiratory chain by straight-chain acyl-CoA dehydrogenases and other dehydrogenases. Mitochondrial fatty acids oxidation and amino acids metabolism are affected in MADD(Multiple acyl-CoA dehydrogenase deficiency). These disorders are linked to a dysfunction of ETF. ETF is a mitochondrial matrix protein consisting of alpha- (30kDa) and beta- (28kDa) subunits encoded by the ETFA and ETFB genes, respectively. (PMID: 31996215, PMID: 16510302)

## Storage

**Storage:**

Store at -20°C. Stable for one year after shipment.

**Storage Buffer:**

PBS with 0.02% sodium azide and 50% glycerol pH 7.3.

**Aliquoting is unnecessary for -20°C storage**

\*\*\* 20ul sizes contain 0.1% BSA

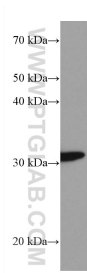
For technical support and original validation data for this product please contact:

T: 1 (888) 4PTGLAB (1-888-478-4522) (toll free in USA), or 1(312) 455-8498 (outside USA)

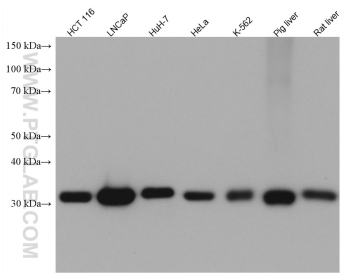
E: [proteintech@ptglab.com](mailto:proteintech@ptglab.com)  
W: [ptglab.com](http://ptglab.com)

This product is exclusively available under Proteintech Group brand and is not available to purchase from any other manufacturer.

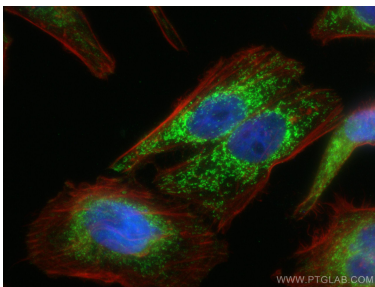
Selected Validation Data



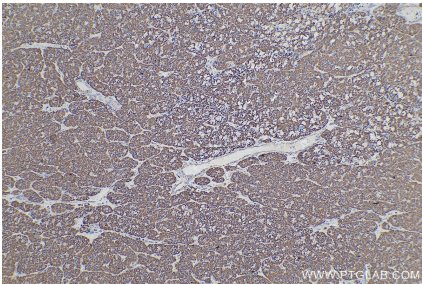
mouse brain tissue were subjected to SDS PAGE followed by western blot with 67661-1-Ig (ETFA antibody) at dilution of 1:10000 incubated at room temperature for 1.5 hours.



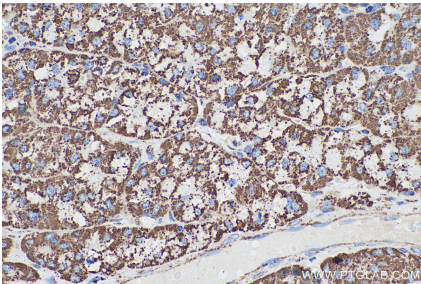
Various lysates were subjected to SDS PAGE followed by western blot with 67661-1-Ig (ETFA antibody) at dilution of 1:10000 incubated at room temperature for 1.5 hours.



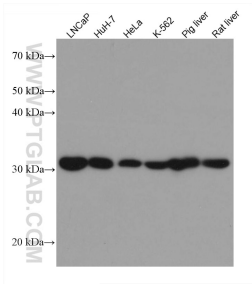
Immunofluorescent analysis of (4% PFA) fixed HepG2 cells using ETFA antibody (67661-1-Ig, Clone: 3C12G5 ) at dilution of 1:400 and CoraLite@488-Conjugated Goat Anti-Mouse IgG(H+L), CL594-Phalloidin (red). DAPI (blue).



Immunohistochemical analysis of paraffin-embedded human liver cancer tissue slide using 67661-1-Ig (ETFA antibody) at dilution of 1:16000 (under 10x lens). Heat mediated antigen retrieval with Tris-EDTA buffer (pH 9.0).



Immunohistochemical analysis of paraffin-embedded human liver cancer tissue slide using 67661-1-Ig (ETFA antibody) at dilution of 1:16000 (under 40x lens). Heat mediated antigen retrieval with Tris-EDTA buffer (pH 9.0).



Various lysates were subjected to SDS PAGE followed by western blot with 67661-1-Ig (ETFA antibody) at dilution of 1:10000 incubated at room temperature for 1.5 hours.