

For Research Use Only

IMPDH2 Monoclonal antibody, PBS Only



Catalog Number: 67663-1-PBS

Featured Product

Basic Information

Catalog Number:

67663-1-PBS

Size:

100ug, Concentration: 1 mg/ml by Nanodrop;

Source:

Mouse

Isotype:

IgG1

Immunogen Catalog Number:

AG17170

GenBank Accession Number:

BC012840

GeneID (NCBI):

3615

UNIPROT ID:

P12268

Full Name:

IMP (inosine monophosphate) dehydrogenase 2

Calculated MW:

514 aa, 56 kDa

Observed MW:

56 kDa

Purification Method:

Protein A purification

CloneNo.:

1B1G8

Applications

Tested Applications:

WB, IF, IHC, Indirect ELISA

Species Specificity:

Human, mouse, rat

Background Information

IMPDH2, also named as IMPD2, belongs to the IMPDH/GMPR family. It is a rate limiting enzyme in the de novo synthesis of guanine nucleotides and therefore is involved in the regulation of cell growth. It may also have a role in the development of malignancy and the growth progression of some tumors. IMPDH2 is a key enzyme in the purine nucleotide biosynthetic pathway and constitutes a pivotal biological target for immunosuppressant and antiviral drugs. (PMID:21181270)

Storage

Storage:

Store at -80°C.

Storage Buffer:

PBS Only

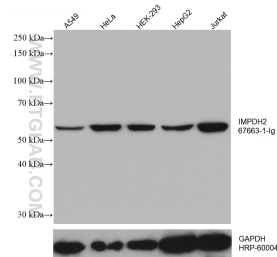
For technical support and original validation data for this product please contact:

T: 1 (888) 4PTGLAB (1-888-478-4522) (toll free in USA), or 1(312) 455-8498 (outside USA)

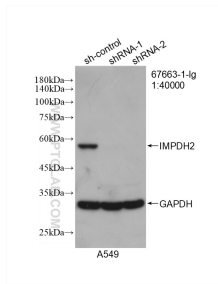
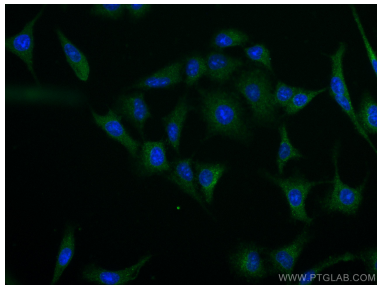
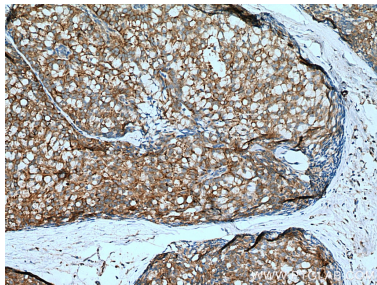
E: proteintech@ptglab.com
W: ptglab.com

This product is exclusively available under Proteintech Group brand and is not available to purchase from any other manufacturer.

Selected Validation Data



Various lysates were subjected to SDS PAGE followed by western blot with 67663-1-Ig (IMPDH2 antibody) at dilution of 1:10000 incubated at room temperature for 1.5 hours. The membrane was stripped and reblotted with HRP-conjugated GAPDH Monoclonal antibody (HRP-60004) as loading control. This data was developed using the same antibody clone with 67663-1-PBS in a different storage buffer formulation.



WB result of IMPDH2 antibody (67663-1-Ig; 1:40000; incubated at room temperature for 1.5 hours) with sh-Control and sh-IMP2 transfected A549 cells. This data was developed using the same antibody clone with 67663-1-PBS in a different storage buffer formulation.