

For Research Use Only

DVL1 Monoclonal antibody

Catalog Number: 67672-1-Ig



Basic Information

| | | |
|---|--|---|
| Catalog Number: 67672-1-Ig | GenBank Accession Number: BC050454 | Purification Method: Protein G purification |
| Size: 150ul , Concentration: 1100 ug/ml by Nanodrop and 500 ug/ml by Bradford method using BSA as the standard; | GeneID (NCBI): 1855 | CloneNo.: 1A2A5 |
| Source: Mouse | UNIPROT ID: O14640 | Recommended Dilutions: WB 1:1000-1:8000 IHC 1:500-1:2000 |
| Isotype: IgG1 | Full Name: dishevelled, dsh homolog 1 (Drosophila) | |
| Immunogen Catalog Number: AG26083 | Calculated MW: 75 kDa | |
| | Observed MW: 70-75 kDa | |

Applications

| | |
|---|---|
| Tested Applications: WB, IHC, ELISA | Positive Controls: |
| Species Specificity: Human, rat, mouse | WB : HEK-293 cells, ROS1728 cells, NCCIT cells, HeLa cells, MDA-MB-231 cells |
| Note-IHC: suggested antigen retrieval with TE buffer pH 9.0; (*) Alternatively, antigen retrieval may be performed with citrate buffer pH 6.0 | IHC : rat colon tissue, mouse colon tissue |

Background Information

DVL1 is one of three DVL homologous proteins (DVL1-3) widely expressed in embryonic development and in the adult central nervous system. Dishevelled proteins are a necessary component of the Wnt and planar cell polarity developmental signaling pathways. Overexpression of DVL1 has been linked to prostate and breast cancers through the Wnt signaling pathway. There are two isoforms of DVL1: 75 kDa and 73 kDa.

Storage

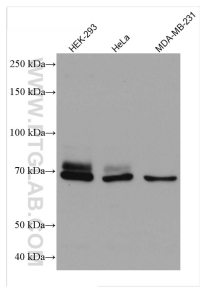
Storage:
Store at -20°C.
Storage Buffer:
PBS with 0.02% sodium azide and 50% glycerol pH 7.3.
Aliquoting is unnecessary for -20°C storage

*** 20ul sizes contain 0.1% BSA

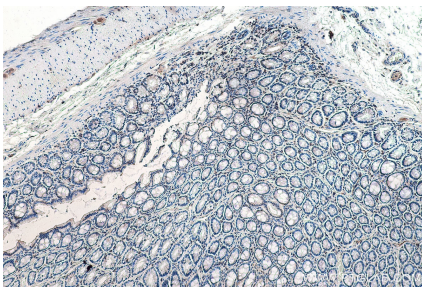
For technical support and original validation data for this product please contact:
T: 1 (888) 4PTGLAB (1-888-478-4522) (toll free in USA), or 1(312) 455-8498 (outside USA)
E: proteintech@ptglab.com
W: ptglab.com

This product is exclusively available under Proteintech Group brand and is not available to purchase from any other manufacturer.

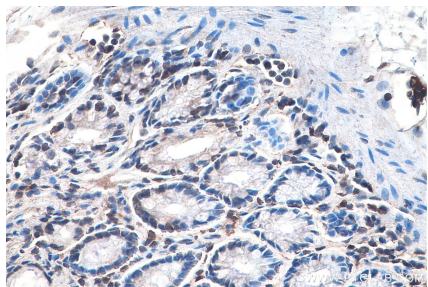
Selected Validation Data



Various lysates were subjected to SDS PAGE followed by western blot with 67672-1-Ig (DVL1 antibody) at dilution of 1:4000 incubated at room temperature for 1.5 hours.



Immunohistochemical analysis of paraffin-embedded rat colon tissue slide using 67672-1-Ig (DVL1 antibody) at dilution of 1:1000 (under 10x lens). Heat mediated antigen retrieval with Tris-EDTA buffer (pH 9.0).



Immunohistochemical analysis of paraffin-embedded rat colon tissue slide using 67672-1-Ig (DVL1 antibody) at dilution of 1:1000 (under 40x lens). Heat mediated antigen retrieval with Tris-EDTA buffer (pH 9.0).