

For Research Use Only

DVL1 Monoclonal antibody

Catalog Number: 67672-1-Ig 1 Publications



Basic Information

Catalog Number: 67672-1-Ig	GenBank Accession Number: BC050454	Purification Method: Protein G purification
Size: 150ul , Concentration: 1100 ug/ml by Nanodrop and 500 ug/ml by Bradford method using BSA as the standard;	GeneID (NCBI): 1855	CloneNo.: 1A2A5
Source: Mouse	UNIPROT ID: O14640	Recommended Dilutions: WB 1:1000-1:8000 IHC 1:500-1:2000
Isotype: IgG1	Full Name: dishevelled, dsh homolog 1 (Drosophila)	
Immunogen Catalog Number: AG26083	Calculated MW: 75 kDa	
	Observed MW: 70-75 kDa	

Applications

Tested Applications: WB, IHC, ELISA	Positive Controls:
Cited Applications: WB	WB : HEK-293 cells, ROS1728 cells, NCCIT cells, HeLa cells, MDA-MB-231 cells
Species Specificity: Human, rat, mouse	IHC : rat colon tissue, mouse colon tissue
Cited Species: human	
Note-IHC: suggested antigen retrieval with TE buffer pH 9.0; (*) Alternatively, antigen retrieval may be performed with citrate buffer pH 6.0	

Background Information

DVL1 is one of three DVL homologous proteins (DVL1-3) widely expressed in embryonic development and in the adult central nervous system. Dishevelled proteins are a necessary component of the Wnt and planar cell polarity developmental signaling pathways. Overexpression of DVL1 has been linked to prostate and breast cancers through the Wnt signaling pathway. There are two isoforms of DVL1: 75 kDa and 73 kDa.

Notable Publications

Author	Pubmed ID	Journal	Application
Chunhui Ma	39964654	Mol Divers	WB

Storage

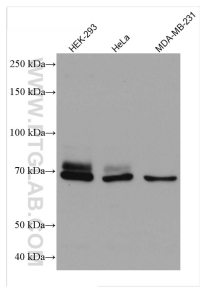
Storage:
Store at -20°C.
Storage Buffer:
PBS with 0.02% sodium azide and 50% glycerol, pH7.3
Aliquoting is unnecessary for -20°C storage

*** 20ul sizes contain 0.1% BSA

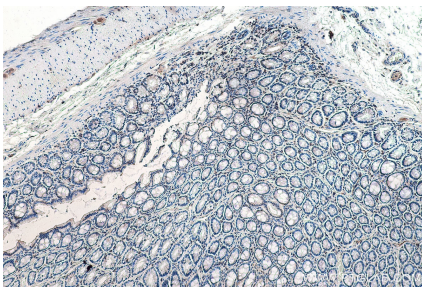
For technical support and original validation data for this product please contact:
T: 1 (888) 4PTGLAB (1-888-478-4522) (toll free in USA), or 1(312) 455-8498 (outside USA)
E: proteintech@ptglab.com
W: ptglab.com

This product is exclusively available under Proteintech Group brand and is not available to purchase from any other manufacturer.

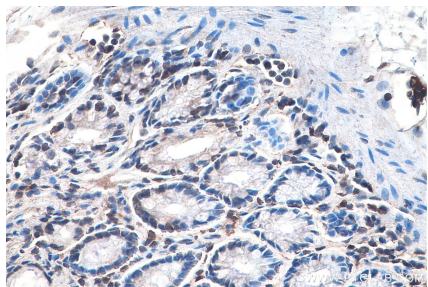
Selected Validation Data



Various lysates were subjected to SDS PAGE followed by western blot with 67672-1-Ig (DVL1 antibody) at dilution of 1:4000 incubated at room temperature for 1.5 hours.



Immunohistochemical analysis of paraffin-embedded rat colon tissue slide using 67672-1-Ig (DVL1 antibody) at dilution of 1:1000 (under 10x lens). Heat mediated antigen retrieval with Tris-EDTA buffer (pH 9.0).



Immunohistochemical analysis of paraffin-embedded rat colon tissue slide using 67672-1-Ig (DVL1 antibody) at dilution of 1:1000 (under 40x lens). Heat mediated antigen retrieval with Tris-EDTA buffer (pH 9.0).