

For Research Use Only

ERP29 Monoclonal antibody

Catalog Number: 67675-1-Ig **1 Publications**



Basic Information

Catalog Number: 67675-1-Ig	GenBank Accession Number: BC101495	Purification Method: Protein A purification
Size: 150ul , Concentration: 1100 ug/ml by Nanodrop and 500 ug/ml by Bradford method using BSA as the standard;	GeneID (NCBI): 10961	CloneNo.: 1H8B2
Source: Mouse	UNIPROT ID: P30040	Recommended Dilutions: WB 1:5000-1:50000 IHC 1:500-1:2000 IF-P 1:200-1:800
Isotype: IgG2a	Full Name: endoplasmic reticulum protein 29	
Immunogen Catalog Number: AG30262	Calculated MW: 261 aa, 29 kDa	
	Observed MW: 29 kDa	

Applications

Tested Applications: WB, IHC, IF-P, ELISA	Positive Controls:
Cited Applications: WB	WB : HeLa cells, HEK-293 cells, Jurkat cells, K-562 cells, HSC-T6 cells, NIH/3T3 cells, 4T1 cells
Species Specificity: Human, Mouse, Rat	IHC : human liver tissue, human kidney tissue
Cited Species: rat	IF-P : human kidney tissue,
Note-IHC: suggested antigen retrieval with TE buffer pH 9.0; (*) Alternatively, antigen retrieval may be performed with citrate buffer pH 6.0	

Notable Publications

Author	Pubmed ID	Journal	Application
Amber M Cheatham	37702712	J Cell Biol	WB

Storage

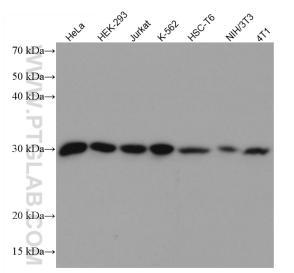
Storage:
Store at -20°C.
Storage Buffer:
PBS with 0.02% sodium azide and 50% glycerol pH 7.3.
Aliquoting is unnecessary for -20°C storage

*** 20ul sizes contain 0.1% BSA

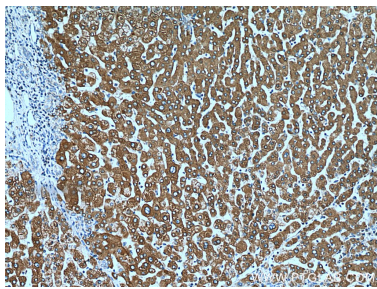
For technical support and original validation data for this product please contact:
T: 1 (888) 4PTGLAB (1-888-478-4522) (toll free in USA), or 1(312) 455-8498 (outside USA)
E: proteintech@ptglab.com
W: ptglab.com

This product is exclusively available under Proteintech Group brand and is not available to purchase from any other manufacturer.

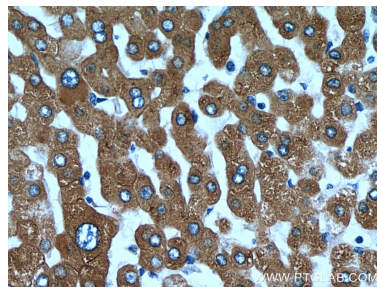
Selected Validation Data



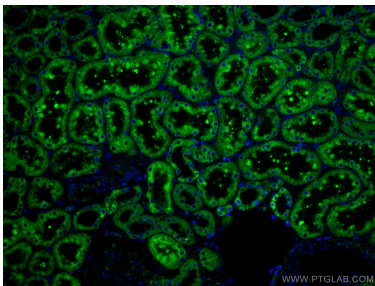
Various lysates were subjected to SDS PAGE followed by western blot with 67675-1-Ig (ERP29 antibody) at dilution of 1:10000 incubated at room temperature for 1.5 hours.



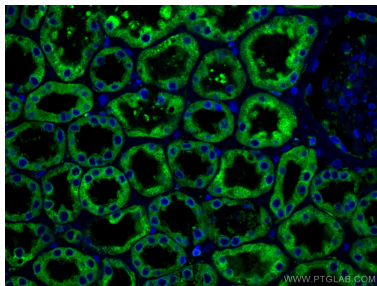
Immunohistochemical analysis of paraffin-embedded human liver tissue slide using 67675-1-Ig (ERP29 antibody) at dilution of 1:1000 (under 10x lens). Heat mediated antigen retrieval with Tris-EDTA buffer (pH 9.0).



Immunohistochemical analysis of paraffin-embedded human liver tissue slide using 67675-1-Ig (ERP29 antibody) at dilution of 1:1000 (under 40x lens). Heat mediated antigen retrieval with Tris-EDTA buffer (pH 9.0).



Immunofluorescent analysis of (4% PFA) fixed human kidney tissue using ERP29 antibody (67675-1-Ig, Clone: 1H8B2) at dilution of 1:400 and CoraLite®488-Conjugated Goat Anti-Mouse IgG(H+L).



Immunofluorescent analysis of (4% PFA) fixed human kidney tissue using ERP29 antibody (67675-1-Ig, Clone: 1H8B2) at dilution of 1:400 and CoraLite®488-Conjugated Goat Anti-Mouse IgG(H+L).