

For Research Use Only

# LRPPRC Monoclonal antibody

Catalog Number: 67679-1-Ig

Featured Product

2 Publications



## Basic Information

Catalog Number:

67679-1-Ig

Size:

150ul, Concentration: 1100 ug/ml by Nanodrop and 500 ug/ml by Bradford method using BSA as the standard;

Source:

Mouse

Isotype:

IgG2b

Immunogen Catalog Number:

AG30261

GenBank Accession Number:

BC050311

GeneID (NCBI):

10128

UNIPROT ID:

P42704

Full Name:

leucine-rich PPR-motif containing

Calculated MW:

1394 aa, 158 kDa

Observed MW:

130 kDa

Purification Method:

Protein A purification

CloneNo.:

3H7E1

Recommended Dilutions:

WB 1:5000-1:50000

IHC 1:2000-1:8000

IF/ICC 1:200-1:800

## Applications

Tested Applications:

WB, IHC, IF/ICC, ELISA

Cited Applications:

WB, IF

Species Specificity:

human

Cited Species:

human

**Note-IHC: suggested antigen retrieval with TE buffer pH 9.0; (\*) Alternatively, antigen retrieval may be performed with citrate buffer pH 6.0**

Positive Controls:

WB : U2OS cells, U-251 cells, HeLa cells, HepG2 cells

IHC : human colon cancer tissue, human endometrial cancer tissue, human liver cancer tissue

IF/ICC : HeLa cells, HEK-293 cells, HepG2 cells, A431 cells

## Background Information

LRPPRC (also called LRP130 or GP130) is a 130-kDa RNA-binding protein of the pentatricopeptide repeat family. LRPPRC localizes primarily to the mitochondria where it binds to poly(A) mRNA. It plays a role in translation or stability of mitochondrially encoded cytochrome c oxidase (COX) subunits. LRPPRC has also been shown to regulate nuclear gene transcription and to bind specific RNA molecules in both the nucleus and the cytoplasm. Mutations in LRPPRC gene are associated with the French-Canadian type of Leigh syndrome.

## Notable Publications

Author	Pubmed ID	Journal	Application
Dongqing Gu	38881895	Front Immunol	IF
Kejuan Jia	37139237	Front Genet	WB

## Storage

Storage:

Store at -20°C. Stable for one year after shipment.

Storage Buffer:

PBS with 0.02% sodium azide and 50% glycerol pH 7.3.

Aliquoting is unnecessary for -20°C storage

\*\*\* 20ul sizes contain 0.1% BSA

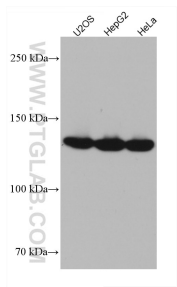
For technical support and original validation data for this product please contact:

T: 1 (888) 4PTGLAB (1-888-478-4522) (toll free in USA), or 1(312) 455-8498 (outside USA)

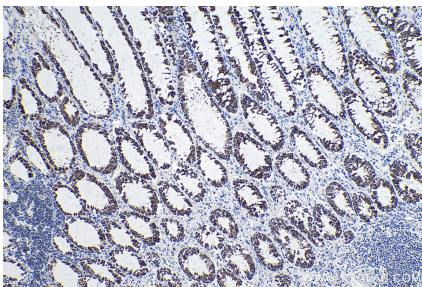
E: [proteintech@ptglab.com](mailto:proteintech@ptglab.com)  
W: [ptglab.com](http://ptglab.com)

This product is exclusively available under Proteintech Group brand and is not available to purchase from any other manufacturer.

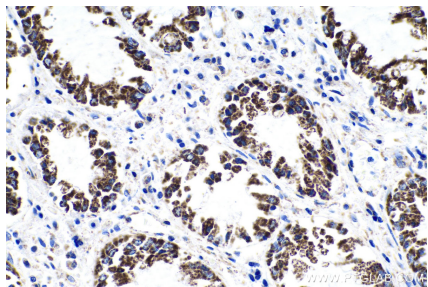
Selected Validation Data



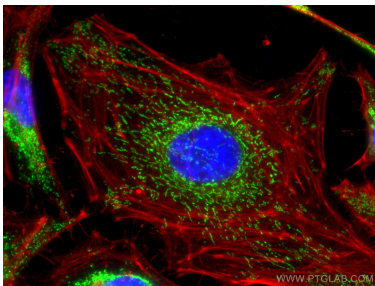
Various lysates were subjected to SDS PAGE followed by western blot with 67679-1-Ig (LRPPRC antibody) at dilution of 1:10000 incubated at room temperature for 1.5 hours.



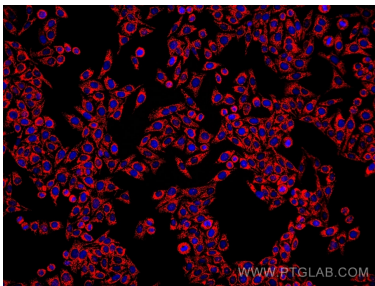
Immunohistochemical analysis of paraffin-embedded human colon cancer tissue slide using 67679-1-Ig (LRPPRC antibody) at dilution of 1:4000 (under 10x lens). Heat mediated antigen retrieval with Tris-EDTA buffer (pH 9.0).



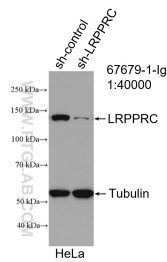
Immunohistochemical analysis of paraffin-embedded human colon cancer tissue slide using 67679-1-Ig (LRPPRC antibody) at dilution of 1:4000 (under 40x lens). Heat mediated antigen retrieval with Tris-EDTA buffer (pH 9.0).



Immunofluorescent analysis of (4% PFA) fixed HeLa cells using LRPPRC antibody (67679-1-Ig, Clone: 3H7E1 ) at dilution of 1:400 and CoraLite® 488-Conjugated AffiniPure Goat Anti-Mouse IgG(H+L).



Immunofluorescent analysis of (4% PFA) fixed HepG2 cells using LRPPRC antibody (67679-1-Ig, Clone: 3H7E1 ) at dilution of 1:1000 and Multi-rAb CoraLite® Plus 594-Goat Anti-Mouse Recombinant Secondary Antibody (H+L) (Cat.NO. RGAM004 ).



WB result of LRPPRC antibody (67679-1-Ig; 1:40000; incubated at room temperature for 1.5 hours) with sh-Control and sh-LRPPRC transfected HeLa cells.