

For Research Use Only

# LRPPRC Monoclonal antibody, PBS Only



Catalog Number: 67679-1-PBS

Featured Product

## Basic Information

Catalog Number:

67679-1-PBS

Size:

100ug, Concentration: 1 mg/ml by Nanodrop;

Source:

Mouse

Isotype:

IgG2b

Immunogen Catalog Number:

AG30261

GenBank Accession Number:

BC050311

GeneID (NCBI):

10128

UNIPROT ID:

P42704

Full Name:

leucine-rich PPR-motif containing

Calculated MW:

1394 aa, 158 kDa

Observed MW:

130 kDa

Purification Method:

Protein A purification

CloneNo.:

3H7E1

## Applications

Tested Applications:

WB, IF, IHC, ELISA

Species Specificity:

Human

## Background Information

LRPPRC (also called LRP130 or GP130) is a 130-kDa RNA-binding protein of the pentatricopeptide repeat family. LRPPRC localizes primarily to the mitochondria where it binds to poly(A) mRNA. It plays a role in translation or stability of mitochondrially encoded cytochrome c oxidase (COX) subunits. LRPPRC has also been shown to regulate nuclear gene transcription and to bind specific RNA molecules in both the nucleus and the cytoplasm. Mutations in LRPPRC gene are associated with the French-Canadian type of Leigh syndrome.

## Storage

Storage:

Store at -80°C.

Storage Buffer:

PBS only

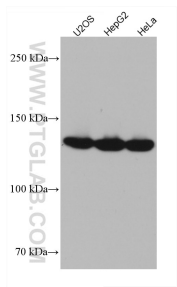
For technical support and original validation data for this product please contact:

T: 1 (888) 4PTGLAB (1-888-478-4522) (toll free in USA), or 1(312) 455-8498 (outside USA)

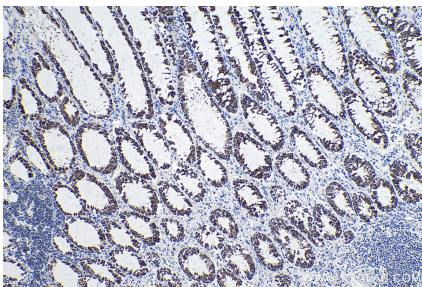
E: [proteintech@ptglab.com](mailto:proteintech@ptglab.com)  
W: [ptglab.com](http://ptglab.com)

This product is exclusively available under Proteintech Group brand and is not available to purchase from any other manufacturer.

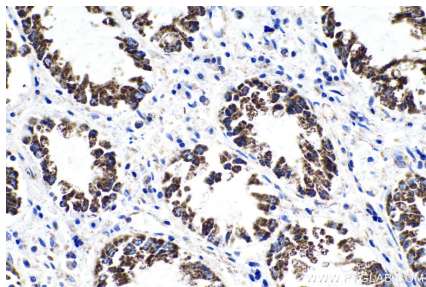
Selected Validation Data



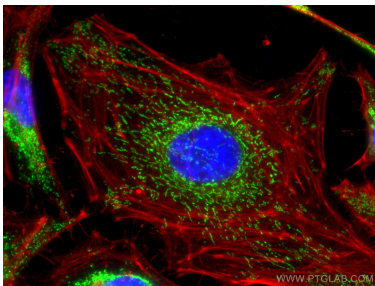
Various lysates were subjected to SDS PAGE followed by western blot with 67679-1-Ig (LRPPRC antibody) at dilution of 1:10000 incubated at room temperature for 1.5 hours. This data was developed using the same antibody clone with 67679-1-PBS in a different storage buffer formulation.



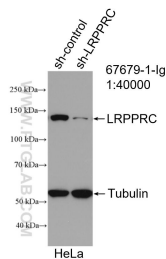
Immunohistochemical analysis of paraffin-embedded human colon cancer tissue slide using 67679-1-Ig (LRPPRC antibody) at dilution of 1:4000 (under 10x lens). Heat mediated antigen retrieval with Tris-EDTA buffer (pH 9.0). This data was developed using the same antibody clone with 67679-1-PBS in a different storage buffer formulation.



Immunohistochemical analysis of paraffin-embedded human colon cancer tissue slide using 67679-1-Ig (LRPPRC antibody) at dilution of 1:4000 (under 40x lens). Heat mediated antigen retrieval with Tris-EDTA buffer (pH 9.0). This data was developed using the same antibody clone with 67679-1-PBS in a different storage buffer formulation.



Immunofluorescent analysis of (4% PFA) fixed HeLa cells using LRPPRC antibody (67679-1-Ig, Clone: 3H7E1 ) at dilution of 1:400 and CoraLite®488-Conjugated AffiniPure Goat Anti-Mouse IgG(H+L). This data was developed using the same antibody clone with 67679-1-PBS in a different storage buffer formulation.



WB result of LRPPRC antibody (67679-1-Ig; 1:40000; incubated at room temperature for 1.5 hours) with sh-Control and sh-LRPPRC transfected HeLa cells. This data was developed using the same antibody clone with 67679-1-PBS in a different storage buffer formulation.