

For Research Use Only

RPS12 Monoclonal antibody

Catalog Number: 67683-1-Ig



Basic Information

Catalog Number: 67683-1-Ig	GenBank Accession Number: BC017321	Purification Method: Protein G purification
Size: 150ul , Concentration: 1119 µg/ml by Nanodrop and 500 µg/ml by Bradford method using BSA as the standard;	GeneID (NCBI): 6206	CloneNo.: 1A3D1
Source: Mouse	Full Name: ribosomal protein S12	Recommended Dilutions: WB 1:2000-1:10000 IHC 1:250-1:1000 IF 1:50-1:500
Isotype: IgG1	Calculated MW: 132 aa, 15 kDa	
Immunogen Catalog Number: AG9649	Observed MW: 15 kDa	

Applications

Tested Applications:

IF, IHC, WB, ELISA

Species Specificity:

Human, mouse, rat

Note-IHC: suggested antigen retrieval with TE buffer pH 9.0; (*) Alternatively, antigen retrieval may be performed with citrate buffer pH 6.0

Positive Controls:

WB : HeLa cells, NCI-H1299 cells, HEK-293 cells, HepG2 cells, HSC-T6 cells, NIH/3T3 cells, PC-12cells, 4T1 cells

IHC : human breast cancer tissue, human colon cancer tissue

IF : HepG2 cells,

Background Information

RPS12 (ribosomal protein S12) is a plastid ribosomal protein which is a part of the 30S ribosomal subunit. Together with S4 and S5 plays an important role in translational accuracy.

Storage

Storage:

Store at -20°C. Stable for one year after shipment.

Storage Buffer:

PBS with 0.02% sodium azide and 50% glycerol pH 7.3.

Aliquoting is unnecessary for -20°C storage

*** 20ul sizes contain 0.1% BSA

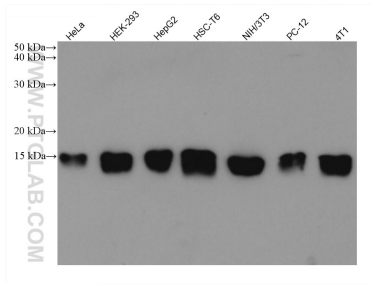
For technical support and original validation data for this product please contact:

T: 1 (888) 4PTGLAB (1-888-478-4522) (toll free in USA), or 1(312) 455-8498 (outside USA)

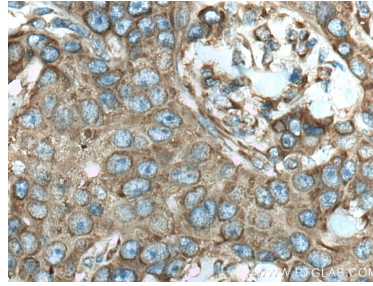
E: proteintech@ptglab.com
W: ptglab.com

This product is exclusively available under Proteintech Group brand and is not available to purchase from any other manufacturer.

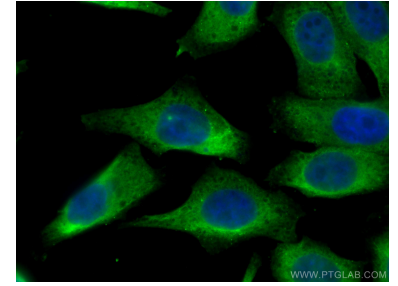
Selected Validation Data



Various lysates were subjected to SDS PAGE followed by western blot with 67683-1-Ig (RPS12 antibody) at dilution of 1:5000 incubated at room temperature for 1.5 hours.



Immunohistochemical analysis of paraffin-embedded human breast cancer tissue slide using 67683-1-Ig (RPS12 antibody) at dilution of 1:500 (under 40x lens). Heat mediated antigen retrieval with Tris-EDTA buffer (pH 9.0).



Immunofluorescent analysis of (4% PFA) fixed HepG2 cells using RPS12 antibody (67683-1-Ig, Clone: 1A3D1) at dilution of 1:200 and CoraLite®488-Conjugated AffiniPure Goat Anti-Mouse IgG(H+L).