

For Research Use Only

cyclin B1 Monoclonal antibody

Catalog Number: 67686-1-Ig

Featured Product

21 Publications



Basic Information

Catalog Number:

67686-1-Ig

Size:

150ul, Concentration: 1000 ug/ml by Nanodrop;

Source:

Mouse

Isotype:

IgG1

Immunogen Catalog Number:

AG29444

GenBank Accession Number:

BC006510

GeneID (NCBI):

891

UNIPROT ID:

P14635

Full Name:

cyclin B1

Calculated MW:

48 kDa

Observed MW:

55 kDa

Purification Method:

Protein A purification

CloneNo.:

1F3G11

Recommended Dilutions:

WB 1:2000-1:10000

IHC 1:1000-1:4000

IF/ICC 1:400-1:1600

Applications

Tested Applications:

WB, IHC, IF/ICC, FC (Intra), ELISA

Cited Applications:

WB, IF

Species Specificity:

human, mouse, rat

Cited Species:

human, mouse, rat

Note-IHC: suggested antigen retrieval with TE buffer pH 9.0; (*) Alternatively, antigen retrieval may be performed with citrate buffer pH 6.0

Positive Controls:

WB : A549 cells, HeLa cells, NIH/3T3 cells, HSC-T6 cells, K-562 cells, Jurkat cells, HEK-293 cells

IHC : human tonsillitis tissue, rat skin tissue

IF/ICC : HeLa cells, HT-29 cells

Background Information

Cyclin B1 is a regulatory protein involved in mitosis. The gene product complexes with p34(cdc2) to form the maturation-promoting factor (MPF). Two alternative transcripts have been found, a constitutively expressed transcript and a cell cycle-regulated transcript, that is expressed predominantly during G2/M phase of the cell cycle. The different transcripts result from the use of alternate transcription initiation sites. The antibody is specific to CCNB1. We got a 55-60 kDa band in western blotting maybe due to phosphorylation.

Notable Publications

Author	Pubmed ID	Journal	Application
Li Zhu	34631884	Biomed Res Int	WB
Tsung-Teng Huang	36499211	Int J Mol Sci	WB
Silu Hou	36427601	Food Chem Toxicol	WB

Storage

Storage:

Store at -20°C. Stable for one year after shipment.

Storage Buffer:

PBS with 0.02% sodium azide and 50% glycerol pH 7.3.

Aliquoting is unnecessary for -20°C storage

*** 20ul sizes contain 0.1% BSA

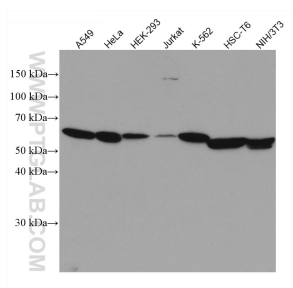
For technical support and original validation data for this product please contact:

T: 1 (888) 4PTGLAB (1-888-478-4522) (toll free in USA), or 1(312) 455-8498 (outside USA)

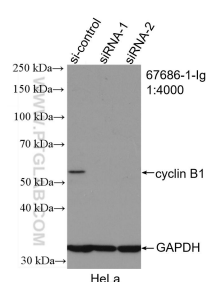
E: proteintech@ptglab.com
W: ptglab.com

This product is exclusively available under Proteintech Group brand and is not available to purchase from any other manufacturer.

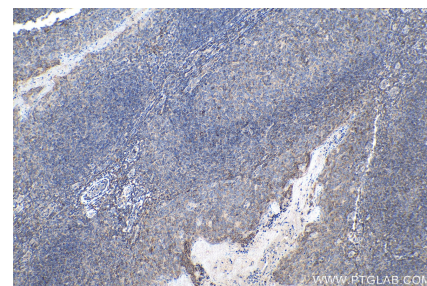
Selected Validation Data



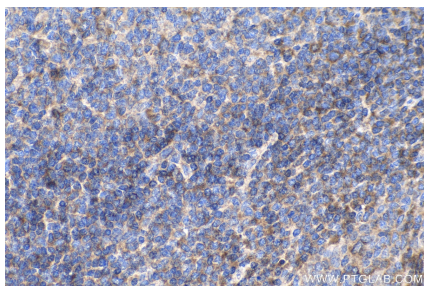
Various lysates were subjected to SDS PAGE followed by western blot with 67686-1-Ig (cyclin B1 antibody) at dilution of 1:4000 incubated at room temperature for 1.5 hours.



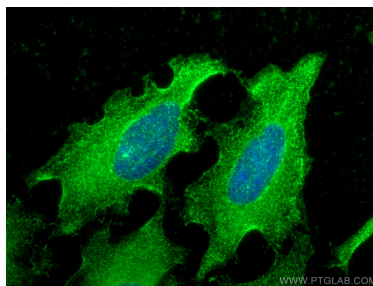
WB result of cyclin B1 antibody (67686-1-Ig; 1:3200; incubated at room temperature for 1.5 hours) with sh-Control and sh-cyclin B1 transfected HeLa cells.



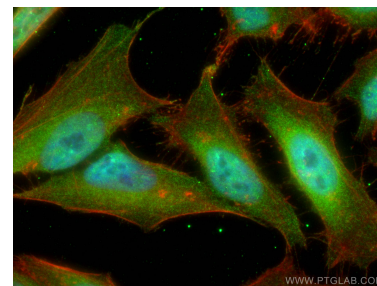
Immunohistochemical analysis of paraffin-embedded human tonsillitis tissue slide using 67686-1-Ig (cyclin B1 antibody) at dilution of 1:1600 (under 10x lens). Heat mediated antigen retrieval with Tris-EDTA buffer (pH 9.0).



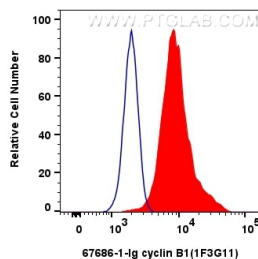
Immunohistochemical analysis of paraffin-embedded human tonsillitis tissue slide using 67686-1-Ig (cyclin B1 antibody) at dilution of 1:1600 (under 40x lens). Heat mediated antigen retrieval with Tris-EDTA buffer (pH 9.0).



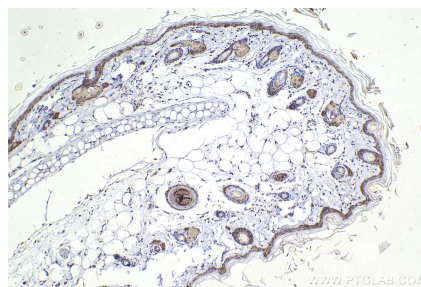
Immunofluorescent analysis of (-20°C Ethanol) fixed HeLa cells using cyclin B1 antibody (67686-1-Ig, Clone: 1F3G11) at dilution of 1:300 and CoraLite®488-Conjugated AffiniPure Goat Anti-Mouse IgG(H+L).



Immunofluorescent analysis of (4% PFA) fixed HeLa cells using cyclin B1 antibody (67686-1-Ig, Clone: 1F3G11) at dilution of 1:650 and CoraLite®488-Conjugated AffiniPure Goat Anti-Mouse IgG(H+L), CL594-Phalloidin (red).



1x10⁶ HeLa cells were intracellularly stained with 0.4 ug cyclin B1 Monoclonal antibody (67686-1-Ig, Clone:1F3G11)(red), or 0.4 ug Mouse IgG1 Isotype Control (MOPC-21) (65124-1-Ig, Clone: MOPC-21) (blue). Cells were fixed with 4% PFA and permeabilized with Flow Cytometry Perm Buffer (PF00011-C).



Immunohistochemical analysis of paraffin-embedded rat skin tissue slide using 67686-1-Ig (cyclin B1 antibody) at dilution of 1:1000 (under 10x lens). Heat mediated antigen retrieval with Tris-EDTA buffer (pH 9.0).