

For Research Use Only

# ALPK1 Monoclonal antibody, PBS Only

Catalog Number: 67689-1-PBS



## Basic Information

<b>Catalog Number:</b> 67689-1-PBS	<b>GenBank Accession Number:</b> BC060780	<b>Purification Method:</b> Protein A purification
<b>Size:</b> 100ug , Concentration: 1mg/ml by Nanodrop;	<b>GeneID (NCBI):</b> 80216	<b>CloneNo.:</b> 2B8B5
<b>Source:</b> Mouse	<b>UNIPROT ID:</b> Q96QP1	
<b>Isotype:</b> IgG1	<b>Full Name:</b> alpha-kinase 1	
<b>Immunogen Catalog Number:</b> AG5320	<b>Calculated MW:</b> 139 kDa	
	<b>Observed MW:</b> 139 kDa	

## Applications

**Tested Applications:**  
WB, IHC, IF/ICC, Indirect ELISA

**Species Specificity:**  
human

## Background Information

Alpha-protein kinase 1, also known as alpha-kinase 1 (ALPK1), is associated with chronic kidney disease (CKD), myocardial infarction, gout and type 2 diabetes mellitus (DM). ALPK1 mutant has been reported to cause severe defects in motor co-ordination in mice. ALPK1 enhances the expression of proinflammatory cytokines including IL-1 $\beta$ , IL-8 and TGF- $\beta$ 1 in cultured human THP1 and human embryonic kidney 293 (HEK293) cells (PMID: 31557402, PMID: 26275947). ALPK1 short isoform (108 kDa) was highly expressed in brain, spinal cord, heart, lung, spleen, thymus, small intestine, skin and testis, while detectable inskeletal muscle and kidney. ALPK1 large isoform (130 kDa) appeared in heart, lung, thymus and skin (PMID: 21208416).

## Storage

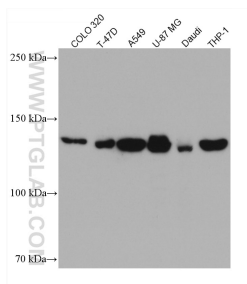
**Storage:**  
Store at -80°C.

**Storage Buffer:**  
PBS Only

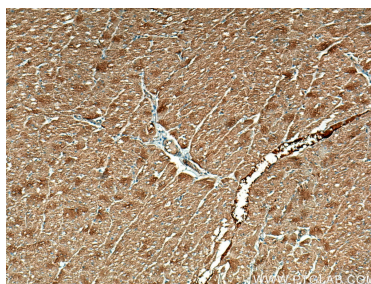
For technical support and original validation data for this product please contact:  
T: 1 (888) 4PTGLAB (1-888-478-4522) (toll free in USA), or 1(312) 455-8498 (outside USA)  
E: [proteintech@ptglab.com](mailto:proteintech@ptglab.com)  
W: [ptglab.com](http://ptglab.com)

This product is exclusively available under Proteintech Group brand and is not available to purchase from any other manufacturer.

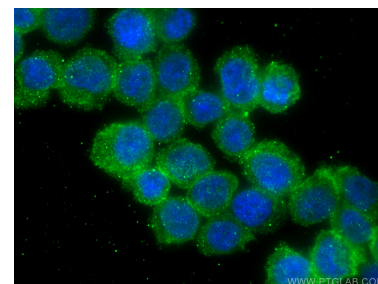
## Selected Validation Data



Various lysates were subjected to SDS PAGE followed by western blot with 67689-1-Ig (ALPK1 antibody) at dilution of 1:5000 incubated at room temperature for 1.5 hours. This data was developed using the same antibody clone with 67689-1-PBS in a different storage buffer formulation.



Immunohistochemical analysis of paraffin-embedded human heart tissue slide using 67689-1-Ig (ALPK1 antibody) at dilution of 1:500 (under 10x lens). Heat mediated antigen retrieval with Tris-EDTA buffer (pH 9.0). This data was developed using the same antibody clone with 67689-1-PBS in a different storage buffer formulation.



Immunofluorescent analysis of (4% PFA) fixed THP-1 cells using ALPK1 antibody (67689-1-Ig, Clone: 2B885 ) at dilution of 1:400 and CoraLite®488-Conjugated AffiniPure Goat Anti-Mouse IgG(H+L) (SA00013-1). This data was developed using the same antibody clone with 67689-1-PBS in a different storage buffer formulation.